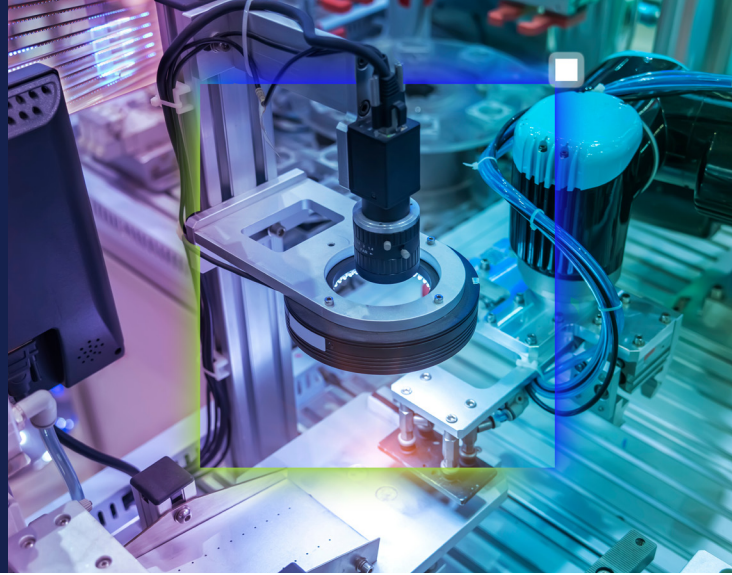


# Powerful Performance, Industrial-Grade Stability, and Rich Expansion Interface



## VKoming MK-T01HF-225HUB0-6C2L

### Built for Harsh Environments with Reinforced, Long-Lasting Circuitry

The MK-T01HF-225HUB0-6C2L is a compact embedded industrial motherboard equipped with a Intel® Core™ Ultra 200S series processor and an integrated NPU. Combined with rule-based algorithms, it provides enhanced artificial intelligence inference capabilities, meeting the needs of modern machine vision applications. It is an ideal solution for machine vision or industrial automation applications, offering high-end CPU performance, dual-channel DDR5 support up to 128GB/6400MT/s, and rich I/O interfaces, including 2 Ethernet ports, 4 display interfaces, 4 USB 3.2 ports, 6 USB 2.0 ports, and 6 COM ports. Furthermore, the MK-T01HF-225HUB0-6C2L features flexible storage options: one Gen4 x4 M.2 NVMe slot for high-speed OS read/write operations, and one internal 2.5"/3.5" hard drive interface, ideal for data recording or video recording. For internal expansion, it provides one M.2 E-Key slot for Wi-Fi expansion and one M.2 B-Key slot for 5G/4G LTE connectivity expansion.



***Equipped with Intel®  
Core™ Ultra processor  
(Series 2) for  
advanced computing  
performance,  
industrial-level  
durability, extensive  
I/O, and flexible  
scalability***

## Intel Products and Technologies

Accelerating AI and Analytics at the Edge



**Intel® Core™  
Ultra Processors**



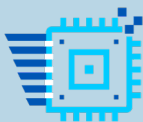
**Intel® Arc™  
Graphics**

**Intel® Trusted Execution  
Technology (Intel® TXT)**

**Intel® Thread Director**

# Key Features

Empowered by Intel.



High-  
Performance  
Processor



Low-Latency  
5G Support



Ultra-Bandwidth  
DDR5 Memory



Wide  
Voltage  
Design

## VKoming MK-T01HF-225HUB0-6C2L



## Product Specifications

CPU	Intel® Core™ Ultra 5 Processor 225H
Graphics	Intel® Arc™ Graphics (iGPU)
Memory	64GB
Storage	1TB
Wireless Network	N/A
LAN	Realtek RTL8111H
Operating / Storage Temp.	0°C~60°C / -15°C~75°C
Dimension (W x D x H)	195mm x 177mm x 62mm
Weight	2000g
OS	Windows/Ubuntu/Linux

## Learn More

[VKoming MK-T01HF-225HUB0-6C2L](#)

Intel technologies may require enabled hardware, software or service activation. // No product or component can be absolutely secure. // Your costs and results may vary. // Performance varies by use, configuration and other factors. // See our complete legal [Notices and Disclaimers](#). // Intel is committed to respecting human rights and avoiding causing or contributing to adverse impacts on human rights. See Intel's [Global Human Rights Principles](#). Intel's products and software are intended only to be used in applications that do not cause or contribute to adverse impacts on human rights.  
© Intel Corporation. Intel, the Intel logo and other Intel marks are trademarks of Intel Corporation or its subsidiaries. Other names and brands may be claimed as the property of others.