



Iterate.ai

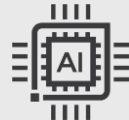
Unlocking the Power of On-Device AI: Generate on Intel-Powered Asus Zenbook

accelerated by **intel.**

On-device AI boosts security, efficiency, and automation

Generate by Iterate.ai, powered by Intel® Core™ Ultra processors, delivers secure, on-device AI for real-time insights, automation, and efficiency. Designed for industries like finance, retail, and healthcare, it enables private AI processing without cloud reliance, ensuring data security and compliance. With features like document search, summarization, and RAG, it streamlines workflows and enhances productivity. Optimized for Intel AI Boost (NPU) and integrated GPUs, it provides fast, scalable AI computing, reducing costs while improving performance.

Key Features



On-Device AI Processing



Automated Workflow Tools



Optimized for Intel AI



Scalable & Secure

Vertical:
Retail
Education
Financial Services

Horizontal Use Cases:
Consumer
Commercial
Productivity

Country/Geo:
Worldwide

“Generate is a private AI assistant that empowers organizations to harness AI securely on local infrastructure—eliminating internet exposure and cloud overage charges—while streamlining workflows with its integrated agentic card capability.”

Brian Sathianathan
CTO, Iterate.ai

Intel Products and Technologies

- Intel® Core™ Ultra 9 Processor 185H
- Intel® AI Boost (NPU)
- Intel® Arc™ Graphics
- Intel® oneAPI Base Toolkit
- Intel® Hybrid AI Processing (CPU + iGPU + NPU)

Learn more:

- <https://www.iterate.ai>
- <https://www.iterate.ai/applications/generate>