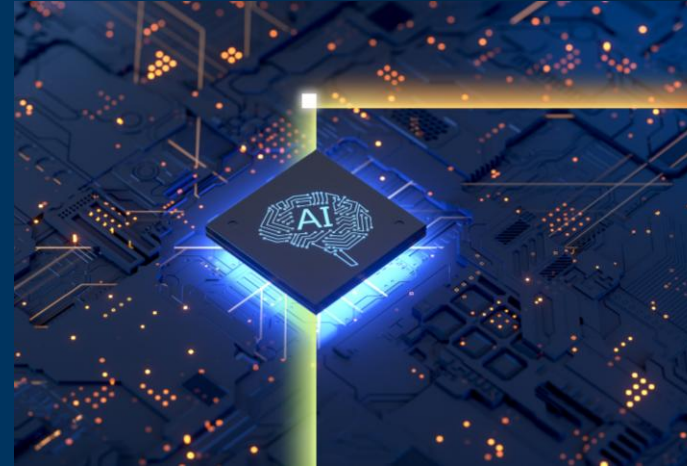


Turnkey AI Inference on CPU/GPU with Observability & Management

Universal AI Inference Platform



*Run any AI model anywhere- Wallaroo + Intel deliver **low-latency, high-throughput inference at scale.***

Wallaroo's turnkey universal AI inference platform accelerates deployment for any AI model on any hardware anywhere in minutes. Automated scaling and load balancing ensure seamless streamlined performance, optimizing latency and maximizing throughput while reducing costs.

The centralized control plane provides automated real-time AI inference management for auditing, versioning, and monitoring with intuitive analytics for automated drift detection, tracking model performance issues early and maintaining model accuracy.

Supporting inline model upgrades with zero downtime maximizes model availability, ensuring AI-driven insights deliver continuous value.

Key Intel-Enabled Features



Rapid Model Deployment



Optimized Inferencing



AI Lifecycle Management

Accelerate Business Transformation with Optimized, Ready-to-Deploy, Intel-Powered AI Partner Solution

- Automated packaging and deployment of models across environments with Intel optimized containerization
- Faster inferencing with optimized models, with low latency and high throughput
- Centralized lifecycle management, with versioning, auditing and tuning, underpinned by Intel® infrastructure that provides scalable compute backbone for continuous operations.

Intel Products and Technologies

- [Intel® Gaudi® AI Accelerator](#)
- [OpenVINO™ Toolkit](#)

Ordering Guidance:

- [Wallaroo.AI | Request a Demo](#)

Country/Geo: Worldwide

Edge Verticals: Financial Services; Government; Retail; Health & Life Sciences

Edge Use Cases: Commercial / Enterprise AI Software

Learn more:

- [Wallaroo.AI Website](#)



Notices & Disclaimers:

Intel technologies may require enabled hardware, software or service activation. // No product or component can be absolutely secure. // Your costs and results may vary. // Intel Statement on Product Usage: Intel is committed to respecting human rights and avoiding causing or contributing to adverse impacts on human rights. See Intel's [Global Human Rights Principles](#). Intel's products and software are intended only to be used in applications that do not cause or contribute to adverse impacts on human rights. © Intel Corporation, Intel, the Intel logo, Intel Core, and other Intel marks are trademarks of Intel Corporation or its subsidiaries. Other names and brands may be claimed as property of others.