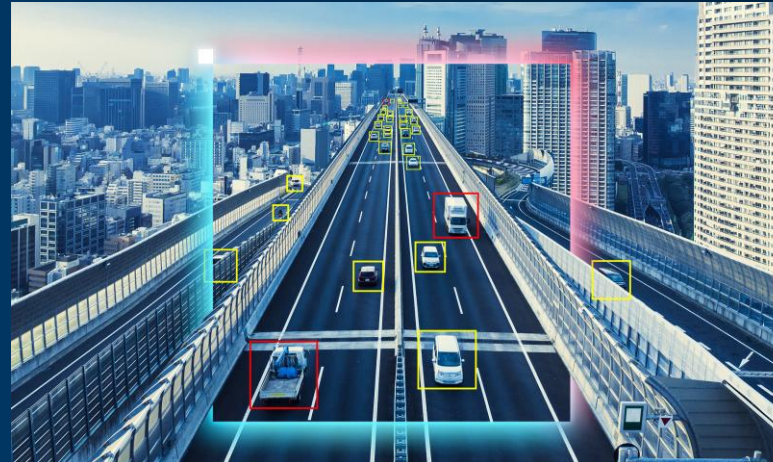


Transforming Fuel Retail with Intelligent Vision AI Insights

Fuel Retail Vision Analytics

Fuel retail networks rely on extensive camera infrastructure, yet most video remains under-utilized. AllGoVision transforms these feeds into actionable intelligence through advanced **Vision AI**, enabling retailers to monitor sites, detect anomalies, and improve operational efficiency. Through **AllGoVision Analytics Center**, a centralized dashboard, fuel retailers can access live and historical insights across multiple stations from a single interface. The platform analyzes **customer behavior**, **vehicle flow**, **safety compliance**, and **on-site activity**, while generating real-time alerts and on-demand business insights.

Built to run reliably on low-bandwidth, distributed retail environments, the platform leverages OpenVINO™ optimization, and scalable cloud-ready architectures, powered by Intel® Core™ Ultra processors, to accelerate analytics at the edge. Together, they enable safer, smarter, and more efficient fuel retail operations.



Edge processing with cloud insights provides accurate, scalable, and cost-effective fuel-retail analytics.

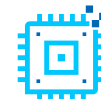
Key Intel-Enabled Features



Vision AI



Accurate ANPR



High Processing Power



Low-Bandwidth Edge Analytics

Accelerate Business Transformation with Optimized, Ready-to-Deploy, Intel-Powered AI Partner Solution

- Intel Edge solutions provide the foundation for scalable, real-time Vision AI processing.
- OpenVINO™ toolkit streamlines ANPR processing.
- Intel® Core™ Ultra processors support affordable edge deployments in cost-sensitive markets.
- Intel Edge technologies enhance analytics performance, even in low-bandwidth environments.

Intel Products and Technologies

- [OpenVINO™ toolkit](#)
- [Intel® Core™ Ultra Processors](#)

Ordering Guidance:

- [Contact Us](#)

Country/Geo: Worldwide; India

Edge Verticals: Retail

Edge Use Cases: Loss Prevention; Shopper Behavior; Event Video Summarization

Learn more:

- [AllGoVision Website](#)

intel ai

Intel® AI Edge Applications

Notices & Disclaimers:

Intel technologies may require enabled hardware, software or service activation. // No product or component can be absolutely secure. // Your costs and results may vary. // Intel Statement on Product Usage: Intel is committed to respecting human rights and avoiding causing or contributing to adverse impacts on human rights. See Intel's [Global Human Rights Principles](#). Intel's products and software are intended only to be used in applications that do not cause or contribute to adverse impacts on human rights. © Intel Corporation, Intel, the Intel logo, Intel Core, and other Intel marks are trademarks of Intel Corporation or its subsidiaries. Other names and brands may be claimed as property of others.