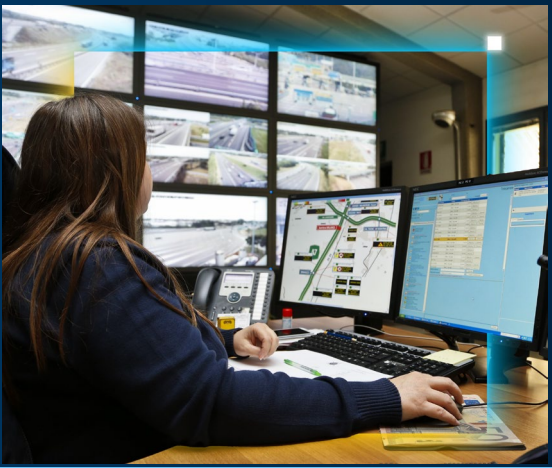


Transform Video Into Smart Transportation Data

Nx Go



Built for transport, Nx Go turns video into data that drives real-time decision-making.

Nx Go is a transportation-focused visual infrastructure platform that turns camera networks and sensors into real-time, structured data, transforming unstructured video into a universal data source. It integrates seamlessly with traffic systems, digital twins, and AI to enable smarter, faster transportation management at scale.

Developed by Network Optix and powered by the Nx Enterprise Video Operating System (Nx EVOS), Nx Go connects to existing camera networks and systems to deliver structured, real-time intelligence, enabling smart cities and transportation agencies to operate more efficiently, respond faster, and make better decisions.

Key Intel-Enabled Features



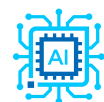
Unified Sensor Data



Real-Time Insights



Scalable & Easy to Use



Open AI Deployment

accelerated by **intel**

Powered by Intel technologies, Nx Go delivers:

- High-throughput processing for real-time, multi-sensor video fusion
- Accelerated video decode and analysis for instant traffic response
- Low-power compute for cost-effective, scalable edge deployments
- Optimized AI inference across devices for flexible model deployment

Intel Products and Technologies

- [Intel® Xeon® Scalable Processors](#)
- [Intel Atom®](#)
- [Intel® Core™ Processors](#)
- [OpenVINO™ Toolkit](#)

Ordering Guidance:

- [Download Nx Go](#)

Country/Geo: North America

Verticals: Enterprise, Government, Transportation

Use Cases: Commercial / Enterprise, Productivity and Accessibility, Manageability, Logistics & Tracking, Situational Monitoring

AI Workload: Computer Vision

Learn more:

- [Nx Go Solution](#)

Notices & Disclaimers:

Intel technologies may require enabled hardware, software or service activation. // No product or component can be absolutely secure. // Your costs and results may vary. // AI features may require software purchase, subscription or enablement by a software or platform provider, or may have specific configuration or compatibility requirements. Details at [AI PC Page](#). Intel Statement on Product Usage: Intel is committed to respecting human rights and avoiding causing or contributing to adverse impacts on human rights. See Intel's [Global Human Rights Principles](#). Intel's products and software are intended only to be used in applications that do not cause or contribute to adverse impacts on human rights. © Intel Corporation, Intel, the Intel logo, Intel Core, and other Intel marks are trademarks of Intel Corporation or its subsidiaries. Other names and brands may be claimed as property of others.