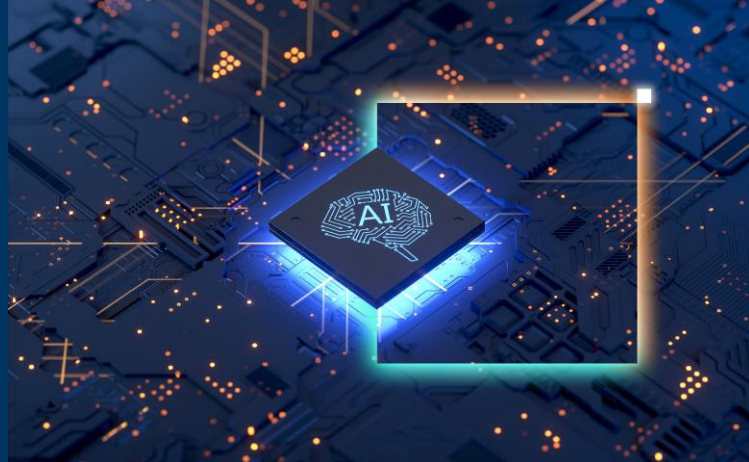


Securely Deploy and Scale AI Across the Enterprise

Model HQ - Local AI

The Intel + LLMWare.ai solution provides a private, no-code, and affordable AI platform for enterprises to build and deploy AI agents, chatbots, and GenAI applications on AI PCs powered by Intel and servers with Intel® Xeon® processors. It mitigates cloud-related risks and unpredictable costs while supporting secure local inferencing and scalable RAG workflows. With over 100 small language models, Model HQ enables fast, code-free development of AI apps, keeping data private and within the enterprise.



*“Run models up to **30x** faster.”¹*

Key Intel-Enabled Features



Local AI Inferencing



RAG (Hybrid AI) Scaling



No-Code Agent Creation



100+ Small Models

Accelerate Business Transformation with Optimized, Ready-to-Deploy, Intel-Powered AI Partner Solution

- Intel® Core™ Ultra processors enable fast, secure local AI on PCs.
- Intel® Xeon® processors scale RAG and enterprise AI workloads.
- Intel® AMX accelerates model inference for efficient GenAI tasks.
- Intel® SVS speeds search for faster, accurate RAG responses.

Intel Products and Technologies

- [Intel® Core™ Ultra Processors](#)
- [Servers with Intel® Xeon® Processors](#)
- [Intel® Advanced Matrix Extensions \(Intel®AMX\)](#)
- [Intel® Scalable Vector Search \(Intel® SVS\)](#)

Ordering Guidance:

- [Contact Us](#)

Country/Geo: Worldwide

Edge Use Cases: Commercial / Enterprise AI Software

Learn more:

- [LLMWare AI for Complex Enterprises](#)



Notices & Disclaimers:

Intel technologies may require enabled hardware, software or service activation. // No product or component can be absolutely secure. // Your costs and results may vary. // Intel Statement on Product Usage: Intel is committed to respecting human rights and avoiding causing or contributing to adverse impacts on human rights. See Intel's [Global Human Rights Principles](#). Intel's products and software are intended only to be used in applications that do not cause or contribute to adverse impacts on human rights. © Intel Corporation, Intel, the Intel logo, Intel Core, and other Intel marks are trademarks of Intel Corporation or its subsidiaries. Other names and brands may be claimed as property of others.

¹ Intel does not control or audit third-party data. You should consult other sources to evaluate accuracy.