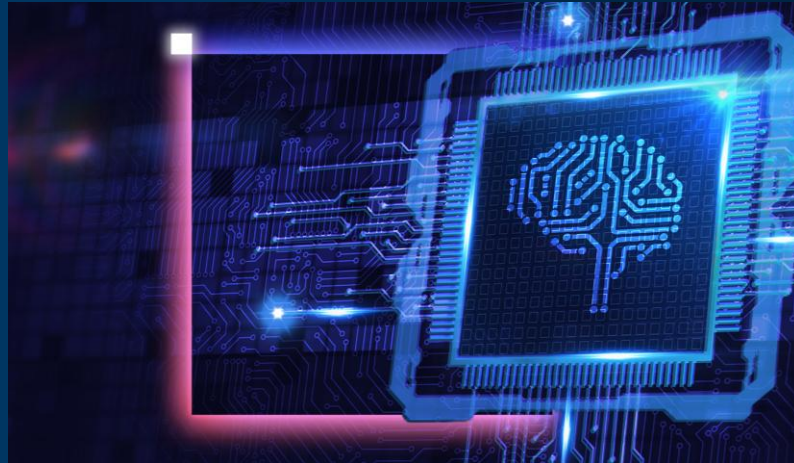


# Scalable MLOps with Advanced Training, Tuning, and Inferencing

## OpenShift AI

Red Hat® OpenShift® AI is an enterprise-grade platform designed to streamline the development, deployment and management of AI applications across hybrid cloud environments. By integrating Intel® Gaudi® AI accelerators, OpenShift AI enhances the performance of deep learning workloads, offering efficient model training and inference capabilities. The platform also supports the Open Platform for Enterprise AI (OPEA), providing a flexible framework for building and scaling AI solutions.

This combination enables organizations to leverage advanced hardware acceleration and open-source tools to optimize AI workflows, ensuring scalability and efficiency in various deployment scenarios.



*“The AI landscape is evolving rapidly, and organizations need agile and powerful solutions to keep pace. Red Hat OpenShift AI, combined with Intel’s AI portfolio, offers a **compelling solution to accelerate the AI journey.**”*

Chris Wright  
Senior Vice President and Chief Technology Officer, Red Hat

### Key Intel-Enabled Features



Integrated Data Handling



Scalable Development & Deployment



Model Training & Fine-Tuning



Model Serving & Deployment



Security & Governance

### Accelerate Business Transformation with Optimized, Ready-to-Deploy, Intel-Powered AI Partner Solution

- Secure data pipelines run efficiently on Intel® Xeon® platforms.
- Deep learning scales faster with Intel® Gaudi® AI accelerator.
- Optimized infrastructure enables reliable model serving on Intel® Xeon® processors.
- Intel® Gaudi® drives high-throughput inference for real-time AI.

### Ordering Guidance:

- [Contact Us](#)

**Country/Geo:** Worldwide

**Edge Verticals:** Retail; Automotive; Energy; Financial Services; Government; Medical

**Edge Use Cases:** Commercial / Enterprise AI Software

### Learn more:

- [Red Hat Website](#)
- [OpenShift AI Solution Page](#)

### Intel Products and Technologies

- [Intel® Xeon® Scalable Processors](#)
- [Intel® Gaudi® AI Accelerators](#)



### Notices & Disclaimers:

Intel technologies may require enabled hardware, software or service activation. // No product or component can be absolutely secure. // Your costs and results may vary. // Intel Statement on Product Usage: Intel is committed to respecting human rights and avoiding causing or contributing to adverse impacts on human rights. See Intel's [Global Human Rights Principles](#). Intel's products and software are intended only to be used in applications that do not cause or contribute to adverse impacts on human rights. © Intel Corporation, Intel, the Intel logo, Intel Core, and other Intel marks are trademarks of Intel Corporation or its subsidiaries. Other names and brands may be claimed as property of others.