

# RPV20 — Level 5 Autonomous Patrol & Logistics Robot

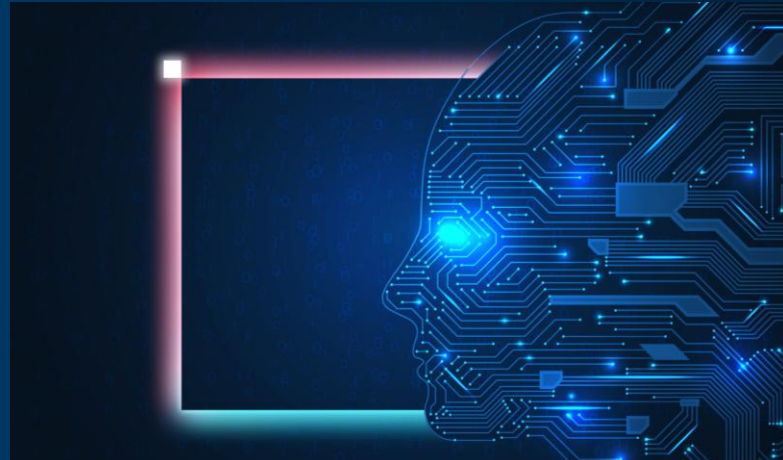
Driving Operational Safety, Efficiency, and Resilience at Scale

Our Level 5 Autonomous Patrol & Logistics Robot is purpose-built to address the critical challenges faced by modern factories, campuses, logistics hubs, and mission-critical infrastructure—where rising labor costs, workforce shortages, and escalating security requirements are accelerating the need for full automation.

This solution delivers true Level 5 autonomy, enabling 24/7 logistics delivery, security patrol, inspection, and incident response with zero human intervention. By automating high-risk and labor-intensive tasks, it significantly enhances operational safety, productivity, and resilience.

Powered by Intel's high-performance computing platform, the robot integrates AI-driven perception, multi-sensor fusion, and edge computing to achieve real-time situational awareness and adaptive decision-making in complex environments.

The RPV20 supports continuous logistics and security operations—from last-mile material handling and autonomous patrol to intelligent intrusion detection and incident response—reliably operating even in dynamic or hazardous settings.



***Fully autonomous robotic patrol with AI-driven multi-sensor perception and cloud control.***

## Key Intel-Enabled Features



L5  
Autonomous  
Ops



AI Sensor  
Fusion



Intel AI  
Compute



Cloud Fleet  
Mgmt

- Intel® CPU/GPU/NPU deliver fast AI inference to enable L5 autonomous operation.
- Intel® architecture accelerates multi-sensor fusion for real-time perception.
- Intel® Edge and cloud tools optimize low-latency processing for smart decisions.
- Intel® platforms ensure scalable, reliable compute for cloud-based fleet management.

## Intel Products and Technologies

- [Intel® Core™ Processors](#)
- [Intel® Xeon® Processors](#)
- [Intel® oneAPI Base Toolkit](#)

### Notices & Disclaimers:

Intel technologies may require enabled hardware, software or service activation. // No product or component can be absolutely secure. // Your costs and results may vary. // Intel Statement on Product Usage: Intel is committed to respecting human rights and avoiding causing or contributing to adverse impacts on human rights. See Intel's [Global Human Rights Principles](#). Intel's products and software are intended only to be used in applications that do not cause or contribute to adverse impacts on human rights. © Intel Corporation, Intel, the Intel logo, Intel Core, and other Intel marks are trademarks of Intel Corporation or its subsidiaries. Other names and brands may be claimed as property of others.

### Ordering Guidance:

- [7Starlake I Contact Us](#)

**Country/Geo:** Worldwide

**Edge Verticals:** Transportation; Manufacturing & Robotics

**Edge Use Cases :** Operational Efficiency; Robotics; Predictive Maintenance; Process Optimization; Fleet Management; Airports Infrastructure

### Learn more:

- [7Starlake Website](#)