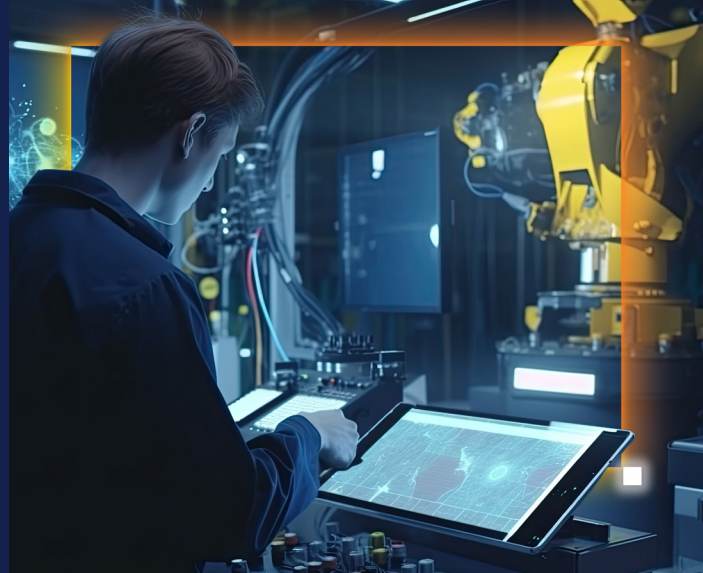


Reliable Edge Computing with Long-Term Availability



AR2200 Model 120R

Embedded Edge PC with Intel® Core™ Processors and Long-Term Reliability

RICOH AR2200 model 120R is a compact and highly reliable embedded edge computer designed for applications requiring stable, long-term operation. Based on Intel® Core™ processor platforms with advanced chipset technology, it delivers strong multi-core performance and responsive system control for machine tools, robotics, semiconductor equipment, and facility management systems.

Edge environments demand consistent operation under varying conditions, where downtime and system instability can lead to operational losses. The RICOH AR2200 model 120R addresses these challenges with a rugged stainless-steel chassis and an optimized thermal design, ensuring stable performance across an operating temperature range of 0°C to 50°C.

The platform supports high-speed NVMe storage with up to three drives and software RAID capability to enhance data reliability. A dedicated RAS controller enables independent hardware monitoring, predictive maintenance, and BIOS protection, helping reduce downtime and improve overall system stability.

Backward compatibility of I/O ports and long-term supply support enable seamless system replacement and efficient lifecycle management.

RICOH × **intel**

Embedded-grade reliability with RAS, long-term availability, and NVMe RAID flexibility

Intel Products and Technologies

Accelerating AI and Analytics at the Edge



**Intel® Core™
Processors**



**Intel® R680E
Chipset**



**Intel® UHD
Graphics**

Key Features

Empowered by Intel.



Long-Term Availability & Backward Compatibility



High-Performance Processing



High Reliability with RAS Monitoring



Flexible NVMe Storage with Software RAID

RICOH AR2200 Model 120R



intel ai

Intel® AI Edge Systems

Product Specifications

CPU	Intel® Core™ Processors (Series 2)
Graphics	Intel® UHD Graphics 770/730/710
Memory	Up to 64 GB DDR5-4800 (subject to change)
Storage	Up to 3,840 GB NVMe SSD (subject to change)
Wireless Network	TBC
LAN	4 x Gigabit Ethernet (GbE)
Operating / Storage Temp.	0°C ~ 50°C / TBC
Dimension (W x D x H)	260mm x 260mm x 99mm (excluding protrusions)
Weight	Approx. 4.5 kg
OS	Windows 11 IoT Enterprise LTSC 2024 (64-bit) / Windows 10 IoT Enterprise 2021 LTSC (64-bit) / Ubuntu 22.04 LTS (64-bit) / RTX64 / INtime®
I/O Options (Input/Output)	USB, Display (RGB/DVI/DP), Serial (RS-232), 4xGbE, optional digital I/O

Learn More

[RICOH AR2200 Model 120R](#)

Intel technologies may require enabled hardware, software or service activation. // No product or component can be absolutely secure. // Your costs and results may vary. // Performance varies by use, configuration and other factors. // See our complete legal [Notices and Disclaimers](#). // Intel is committed to respecting human rights and avoiding causing or contributing to adverse impacts on human rights. See Intel's [Global Human Rights Principles](#). Intel's products and software are intended only to be used in applications that do not cause or contribute to adverse impacts on human rights.

© Intel Corporation. Intel, the Intel logo and other Intel marks are trademarks of Intel Corporation or its subsidiaries. Other names and brands may be claimed as the property of others.