

# Redefining 24/7 Retail, Where Physical Meets Digital Intelligence

## AI-Powered Autonomous Retail Solution

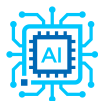
UniStop Tech's AI-Powered Autonomous Retail Solution is a fully enclosed, secure, and adaptive retail system that merges the physical and digital (Phygital) shopping experience. It supports online ordering and offline pickup, creating a seamless omnichannel journey for consumers. The solution operates 24/7 without staff, helping retailers optimize manpower costs and space usage, expand coverage efficiently. With built-in AI, it analyzes real-time sales, inventory, and customer behavior to enable dynamic pricing, personalized recommendations, and intelligent SKU management. The fully enclosed structure ensures safety and prevents theft or vandalism, making it ideal for public areas and autonomous operation.

By combining robotics, automation, and AI, UniStop Tech enables the next generation of smart retail — efficient, adaptive, and future-ready.



*AI-powered 24/7 retail: secure, autonomous, and unlocking untapped markets.*

### Key Intel-Enabled Features



AI Performance Boost



Edge Computing Ready



Smart Vision Processing

Powered by Intel technologies, UniStop Tech's Robotic AI Retail Solution offers:

- Intel® Core™ Ultra processors power real-time AI, vision, and control on one device.
- Integrated Intel® Arc™ GPU accelerates edge AI inference and graphics.
- OpenVINO™ toolkit optimizes model performance for faster, smarter decisions.

### Intel Products and Technologies

- [Intel® Core™ Ultra Processors \(Series 2\)](#)
- [Intel® Arc™ GPU](#)
- [OpenVINO™ Toolkit](#)

### Ordering Guidance:

- [Purchase Robotic AI Retail Solution](#)

**Country/Geo:** US/Canada, Europe, Middle East, Africa, Asia Pacific, Japan, Australia, New Zealand

**Verticals:** Retail

**Use Cases:** Transaction Processing, Inventory Control, Drive Thru Ordering, Fraud Management / Loss Prevention

### Learn more:

- [www.unistoptech.com](http://www.unistoptech.com)

### Notices & Disclaimers:

Intel technologies may require enabled hardware, software or service activation. // No product or component can be absolutely secure. // Your costs and results may vary. // AI features may require software purchase, subscription or enablement by a software or platform provider, or may have specific configuration or compatibility requirements. Intel Statement on Product Usage: Intel is committed to respecting human rights and avoiding causing or contributing to adverse impacts on human rights. See Intel's [Global Human Rights Principles](#). Intel's products and software are intended only to be used in applications that do not cause or contribute to adverse impacts on human rights. © Intel Corporation, Intel, the Intel logo, Intel Core, and other Intel marks are trademarks of Intel Corporation or its subsidiaries. Other names and brands may be claimed as property of others.