

Real-Time Edge Video AI for Safer, Smarter Operations

GrayEye



Transform CCTV into real-time edge AI intelligence for safer cities, resilient infrastructure, and smarter operations.

GrayEye from Graymatics transforms traditional CCTV into an intelligent edge AI platform delivering real-time safety, security, and operational insights across retail, hospitality, manufacturing, and logistics. It shifts video analytics from reactive review to proactive detection, identifying risks such as intrusions, safety violations, congestion, and compliance gaps as they occur.

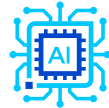
Powered by Intel® Xeon® and Intel® Core™ Ultra processors and optimized with the OpenVINO™ toolkit, Intel® oneAPI Deep Neural Network Library, and Deep Learning Streamer, the solution delivers high-performance, low-latency inference at the edge with efficient power utilization. Advanced metadata indexing and GenAI-assisted search accelerate investigations, while dashboards provide actionable insights to reduce losses, improve worker safety, strengthen compliance, and optimize operations—all while leveraging existing camera infrastructure and minimizing bandwidth and cloud dependency.



Key Intel-Enabled Features



Real-Time Edge Video AI



Video Search AI



Intelligent Dashboard



Flexible Deployment

Accelerate Business Transformation with Optimized, Ready-to-Deploy, Intel-Powered AI Partner Solution

- The OpenVINO™ toolkit accelerates real-time AI inference at edge
- Intel® oneAPI oneDNN boosts fast metadata indexing and video search tasks
- Intel® Xeon® processors power scalable analytics for real-time dashboards
- Intel® Core™ Ultra and Xeon® CPUs optimize performance across deployments

GrayEye

Intel Products and Technologies

- [Intel® oneAPI Deep Neural Network Library](#)
- [Intel® Xeon® Processors](#)
- [OpenVINO™ toolkit](#)
- [Intel® Core™ Ultra Processors](#)
- [Deep Learning Streamer](#)

Notices & Disclaimers:

Intel technologies may require enabled hardware, software or service activation. // No product or component can be absolutely secure. // Your costs and results may vary. // Intel Statement on Product Usage: Intel is committed to respecting human rights and avoiding causing or contributing to adverse impacts on human rights. See Intel's [Global Human Rights Principles](#). Intel's products and software are intended only to be used in applications that do not cause or contribute to adverse impacts on human rights. © Intel Corporation, Intel, the Intel logo, Intel Core, and other Intel marks are trademarks of Intel Corporation or its subsidiaries. Other names and brands may be claimed as property of others.

Ordering Guidance: [Contact Us](#)

Country/Geo: Worldwide

Edge Verticals: Video Safety & Critical Infrastructure; Transportation; Education; Manufacturing; Retail; Health & Life Sciences

Edge Use Cases: Smart City & Critical Infrastructure; Smart Buildings; Video Analytics; Emergency Response; Hazard Detection; Infrastructure Monitoring; Quality Control; Predictive Maintenance; Worker Safety; Loss Prevention; Shopper Behavior; Image Analysis; Virtual Care; Digital Campus

Learn more:

- [Graymatics Website](#)