

# Real-Time AI Video Analytics for Smart Quality Inspection

## EagleEye Video Analytics Platform



Qualitas Technologies' Eagle Eye Video Analytics Platform is an end-to-end AI-powered solution designed for real-time video processing in industrial environments. It ingests live feeds from IP cameras, industrial cameras, and conveyor systems, running multiple AI models simultaneously within a unified pipeline for detection, tracking, and quality analysis.

Deployed on ASUS NUC 15 Pro+, a compact, high-performance edge system powered by Intel® Core™ Ultra processors (Series 2) with integrated GPU and NPU acceleration, the platform enables low-latency, high-throughput AI inferencing directly on-site.

Key features of Eagle Eye Video Analytics Platform include plug-and-play integration with existing infrastructure, scalable multi-camera support, and a Human-in-the-Loop interface for validation and continuous model improvement. A key application is grain quality inspection, where the system performs real-time counting, defect detection, and measurement—replacing manual inspection with consistent, data-driven insights.

*Multi-model  
AI pipeline  
with real-  
time  
insights and  
human-in-  
the-loop  
validation*

## Intel Products & Technologies

Accelerating AI and analytics at the edge



[Intel® Core™ Ultra Processors](#)



[Intel® Iris® Xe Graphics](#)



[OpenVINO™ Toolkit](#)



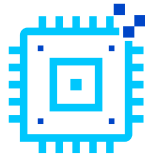
[Deep Learning Streamer](#)

# Key Intel-Enabled Features

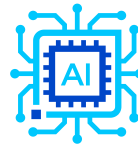
Real-Time AI and analytics make it easy



Fast Edge Inference



Integrated GPU AI



AI Optimization



Low Latency AI

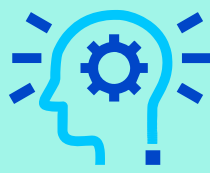
Powered by Intel Processors and optimized with the OpenVINO™ toolkit, Qualitas and ASUS deliver:

01



Intel® Arc™ GPU accelerates real-time AI inference

02



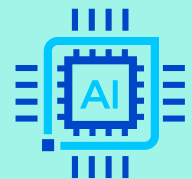
The OpenVINO™ toolkit optimizes AI models for low-latency execution

03



Edge-ready architecture enables scalable industrial deployment

04



Integrated GPU and NPU deliver fast low latency edge AI

That's the power of Intel Inside.

## Country/Geo:

India

## Verticals:

Manufacturing

## Use Cases:

Quality Control; Operational Efficiency; Anomaly Detection; Predictive Maintenance; Process Optimization

## About Qualitas Technologies

Qualitas Technologies develops AI-powered computer vision solutions for industrial automation and quality inspection. The company specializes in defect detection, measurement, and process optimization using edge AI systems, helping manufacturers improve accuracy, efficiency, and overall production quality across diverse industries.

<https://qualitastech.com/>

[Eagle Eye Video Analytics Platform - Edge AI Partner Spotlight](#)

intel ai

Intel® AI Edge Applications

## About ASUS

ASUS is a global technology company driven by innovation and passionate about enhancing digital life. It designs and delivers a broad range of products and solutions that empower people and organizations, combining cutting-edge engineering, quality, and sustainability to create intuitive, reliable experiences for users worldwide.

[www.asus.com](http://www.asus.com)

[ASUS NUC 15 Pro+ - Edge AI Partner Spotlight](#)

intel ai

Intel® AI Edge Systems

### Notices & Disclaimers:

Intel technologies may require enabled hardware, software or service activation. // No product or component can be absolutely secure. // Your costs and results may vary. // AI features may require software purchase, subscription or enablement by a software or platform provider, or may have specific configuration or compatibility requirements. Intel Statement on Product Usage: Intel is committed to respecting human rights and avoiding causing or contributing to adverse impacts on human rights. See Intel's [Global Human Rights Principles](#). Intel's products and software are intended only to be used in applications that do not cause or contribute to adverse impacts on human rights.

© Intel Corporation, Intel, the Intel logo, Intel Core, and other Intel marks are trademarks of Intel Corporation or its subsidiaries.

Other names and brands may be claimed as property of others.