

# Powerful Computing With Edge AI Solutions

## ThinkEdge SE60n Gen2



### A Robust Device, Ideal for AI Workloads & Extreme Industrial Environments

The Lenovo ThinkEdge SE60n Gen2 is engineered for organizations pushing AI to the edge but constrained by harsh environments, legacy infrastructure, and the need for real-time, on-site decision-making. Many industries struggle to process growing data volumes locally while maintaining reliability across distributed operations. Powered by Intel® Core™ Ultra processors (Series 2) with a built-in neural processing unit (NPU), the ThinkEdge SE60n Gen2 delivers up to 97 TOPS AI performance, enabling faster insights for retail, healthcare, manufacturing, and automation. Its IP50-rated, fanless, MIL-SPEC-tested design ensures durability in extreme temperatures, dust protection (with optional dust cover), and vibration. With 15+ ports, expansion I/O, and seamless integration with sensors and legacy equipment, it supports flexible deployment across industrial and commercial environments. Enhanced manageability through Lenovo Device Orchestration, Intel vPro®, and dTPM 2.0 sets it apart from competitors, offering secure, scalable, long-life edge computing built for mission-critical operations.

***Rugged, fanless  
edge AI with NPU  
acceleration,  
rich I/O, and  
secure remote  
manageability***

## Intel Products and Technologies

Accelerating AI and Analytics at the Edge



[Intel® Core™  
Ultra Processors](#)



[Intel® Arc™  
Graphics](#)



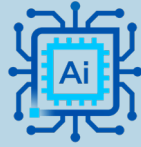
[Intel vPro®](#)



[OpenVINO™  
Toolkit](#)

# Key Features

Empowered by Intel.



On-Device AI  
with Built-In NPU



Extensive I/O  
& Expansion



Rugged Fanless  
MIL-SPEC Design



Enterprise-  
Grade Security

## Lenovo ThinkEdge SE60n Gen2



intel ai

Intel® AI Edge Systems

## Product Specifications

CPU	Intel® Core™ Ultra processors (Series 2)
Graphics	Up to Intel® Arc™ Graphics 8X <sup>e</sup>
Memory	2x 262-pin SODIMM socket Max. up to 64GB DDR5 5600 MT/s
Storage	1x M.2 NVMe + 1x Optional SATA
Wireless Network	Intel® Wi-Fi 6E (non-vPro) / Bluetooth® 5.4
LAN	2 × 2.5GbE LAN ports (RJ-45)
Operating / Storage Temp.	-20°C to 60°C / ?
Dimension (W x D x H)	240 x 150 x 59mm (without I/O expansion) 240 x 150 x 85 mm (with I/O expansion module)
Weight	Standard (2.1L): 2.3kg / Expanded I/O (3.1L): 2.6kg
OS	Windows 11 IoT Enterprise LTSC; Ubuntu core 24.04; Ubuntu server 24.04

## Learn More

[Lenovo ThinkEdge SE60n Gen2](#)

Intel technologies may require enabled hardware, software or service activation. // No product or component can be absolutely secure. // Your costs and results may vary. // Performance varies by use, configuration and other factors. // See our complete legal [Notices and Disclaimers](#). // Intel is committed to respecting human rights and avoiding causing or contributing to adverse impacts on human rights. See Intel's [Global Human Rights Principles](#). Intel's products and software are intended only to be used in applications that do not cause or contribute to adverse impacts on human rights.

© Intel Corporation. Intel, the Intel logo and other Intel marks are trademarks of Intel Corporation or its subsidiaries. Other names and brands may be claimed as the property of others.