

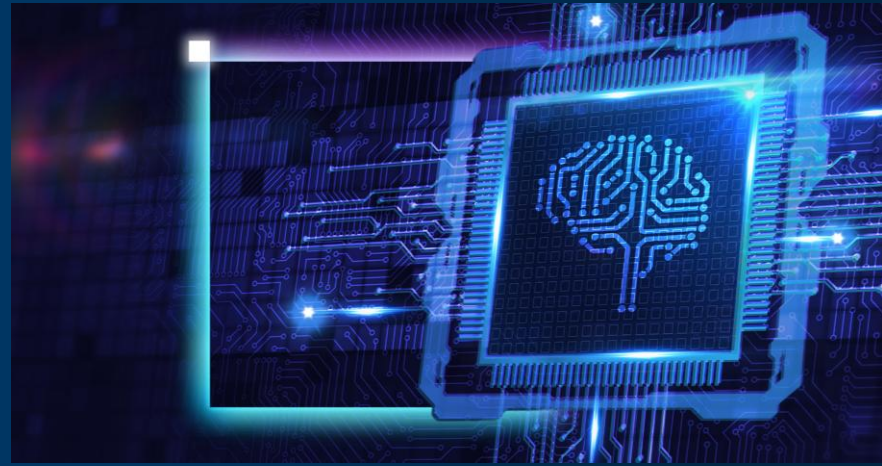
Paradigm Shift: Population Health & Value-Based Care with Prospective Intelligence

AutoChart

Cognome's AutoChart™ uses a proprietary LLM ensemble trained on 30M+ patient records with built-in AI governance to move Population Health Management and Value-based Care from retrospective attribution and reporting to enterprise-wide Prospective Intelligence designed to support earlier interventions with the goal of delivering better patient outcomes.

With proven use cases, AutoChart™ has demonstrated up to 10x faster chart reviews with 99.5% accuracy, 90%+ productivity gains and \$1M+ in annual ROI in a single customer deployment.¹

AutoChart™ is HIPAA compliant, built on the NIST AI RMF and deployed on-prem or in a private cloud to keep data secure and fully under the health system's control. It is optimized on Intel® Xeon® processors with OpenVINO™ Toolkit and integrates rapidly with Epic, Oracle, and Meditech via its AutoETL feature.



- *Prospective Intelligence LLM Ensemble*
- *Accelerated Epic Integration Feature*
- *Designed for HIPAA, built on NIST AI RMF*
- *Built-in AI Governance*

Key Intel-Enabled Features



vLLM Runtime



Optimized Processing



Enhanced Privacy

Accelerate Business Transformation with Optimized, Ready-to-Deploy, Intel-Powered AI Partner Solution

- Optimized with Intel® technologies for high throughput and accelerated AI inference, delivering faster insights and improved efficiency.
- Built on Intel® Xeon® processors to provide scalable performance and help lower total cost of ownership for healthcare systems.
- Flexible architecture supports on-prem or private cloud deployments, meeting strict data-residency and security requirements.

Intel Products and Technologies

- [Intel® Xeon® 6980P Processor](#)
- [Intel® Extension for PyTorch* \(IPEX\)](#)
- [OpenVINO™ Toolkit](#)

Notices & Disclaimers:

Intel technologies may require enabled hardware, software or service activation. // No product or component can be absolutely secure. // Your costs and results may vary. // Intel Statement on Product Usage: Intel is committed to respecting human rights and avoiding causing or contributing to adverse impacts on human rights. See Intel's [Global Human Rights Principles](#). Intel's products and software are intended only to be used in applications that do not cause or contribute to adverse impacts on human rights. © Intel Corporation, Intel, the Intel logo, Intel Core, and other Intel marks are trademarks of Intel Corporation or its subsidiaries. Other names and brands may be claimed as property of others.

¹Based on a specific customer use case and internal testing of Cognome AutoChart optimized with OpenVINO Toolkit on an Intel Xeon 6980P processor with IPEX acceleration. Performance and ROI may vary. Intel does not control or audit third-party data. You should consult other sources to evaluate accuracy.

Ordering Guidance:

- [Contact Us](#)

Country/Geo: North and South America

Verticals: Healthcare & Life Sciences

Use Cases: Human Wellness Monitoring; Asset & Operations Optimization

Learn more:

- [Cognome Website](#)