

Inspiring More Efficient AI in Retail and Automation



NEXCOM NDiS B362 Series AI-Powered Rugged Solution with Rich I/O

The NDiS B362 is NEXCOM's first IPC to feature an integrated NPU, delivering robust edge AI capabilities independent of network connectivity, and, powered by Intel® Core™ Ultra processors (Series 1). By optimizing workloads across the CPU, GPU, and NPU, it achieves up to 22.4 TOPS of AI computing power while maintaining superior energy efficiency.

Built for durability, the system utilizes industrial-grade components rated for extreme temperatures (-20°C to 60°C). Dual HDMI 2.0 ports and versatile I/O interfaces further expand its application potential. Offering powerful AI inference at a competitive price point, the B362 is the ideal solution for semi-outdoor deployments, including:

- Self-service kiosks & Smart beverage stations
- Smart recycling machines
- Intelligent parking systems

NEXCOM × **intel ai**

**AI-enhanced
CPU leveraging
Intel® Core™
Ultra Processors
(Series 1) power
to enable reliable
semi-outdoor
applications in harsh
environments**

Intel Products and Technologies

Accelerating AI and Analytics at the Edge



[Intel® Core™
Ultra Processors](#)

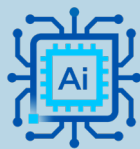


[Intel® Ethernet](#)

[Intel® Active Management
Technology](#)

Key Features

Empowered by Intel.



AI-Enabled



Harsh
Environment
Compatible



Rich I/O
Solutions



Security
& Remote
Manageability

NEXCOM NDiS B362 Series



Product Specifications

CPU	Intel® Core™ Ultra Processor
Graphics	Intel® Graphics
Memory	2 x DDR5 5600 up to 96GB
Storage	1 x M.2 Key M 2280 for optional SSD
Wireless Network	1 x M.2 Key E 2230 for optional Wi-Fi module 1 x M.2 Key B 3052/2242 for optional 5G/LTE module
LAN	1 x 2.5GbE RJ45 Port, Intel® Ethernet Controller I226 1 x GbE RJ45 Port, Intel® Ethernet Connection I219
Operating / Storage Temp.	-20°C ~ 60°C / -20°C ~ 80°C
Dimension (W x D x H)	200mm x 140mm x 37mm (w/o bracket)
Weight	1.26 kg/Unit
OS	Windows 11, Windows 10, Linux
I/O Options (Input / Output)	1 x USB 3.2 + 3 x USB 2.0 (Type A), 2x HDMI 2.0

Learn More

[NEXCOM NDiS B362 Series](#)

Intel technologies may require enabled hardware, software or service activation. // No product or component can be absolutely secure. // Your costs and results may vary. // Performance varies by use, configuration and other factors. // See our complete legal [Notices and Disclaimers](#). // Intel is committed to respecting human rights and avoiding causing or contributing to adverse impacts on human rights. See Intel's [Global Human Rights Principles](#). Intel's products and software are intended only to be used in applications that do not cause or contribute to adverse impacts on human rights.

© Intel Corporation. Intel, the Intel logo and other Intel marks are trademarks of Intel Corporation or its subsidiaries. Other names and brands may be claimed as the property of others.