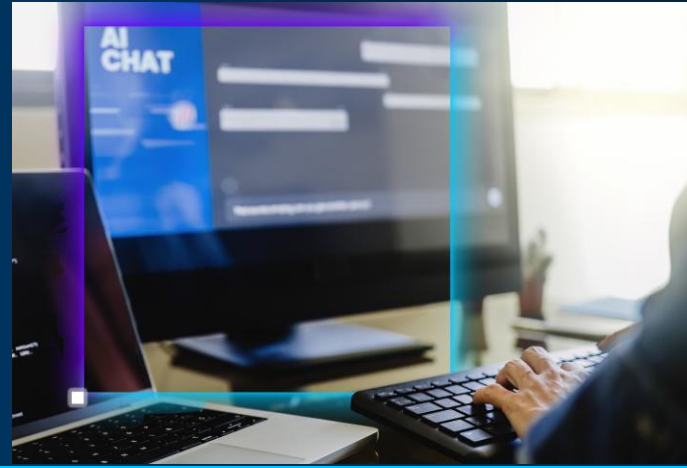


# Instant Answers From Your Enterprise Data

## Dialog XR AI-Powered Chatbot



Unlock *instant, accurate answers* from all your enterprise knowledge.

Bikal's Dialog XR is an AI-powered chatbot platform that enables staff and customers to query internal knowledge—from company policies to product features—and receive fast, accurate responses grounded in the organization's own data.

By surfacing insights directly from existing documentation, Dialog XR delivers consistent, on-brand information across digital channels while reducing reliance on manual support. Its context-aware responses improve efficiency and enhance user engagement at scale.

Powered by Intel® Xeon® 6980P processors and optimized with OpenVINO™ toolkit, Dialog XR achieves low-latency inference and cost-efficient optimization, enabling high-performance, production-ready deployments for enterprise environments.

### Key Intel-Enabled Features



Faster Inference



Reduced Latency



Cost-Efficient

### Accelerate Business Transformation with Optimized, Ready-to-Deploy, Intel-Powered AI Partner Solution

- IPEX boosts model performance on Intel® Xeon® platforms.
- OpenVINO™ toolkit based on INT4 improves latency and throughput at scale.
- Intel® optimizations help reduce compute cost for production workloads.
- Scalable AI performance built to support growing datasets and real-time query demands.

### Intel Products and Technologies

- [Intel® Xeon® 6980P Processor](#)
- [OpenVINO™ Toolkit](#)

### Ordering Guidance:

- [Contact Us](#)

### Country/Geo: Worldwide

**Verticals:** Transportation, Manufacturing & Robotics, Retail, Education, Health & Life Sciences

**Use Cases:** Emergency Response, Quality Control, Anomaly Detection, Image Analysis, Virtual Care, Digital Campus, Intelligent Learning, Road Infrastructure, Smart Rail, Fleet Management, Ports and Marine, Airports Infrastructure

### Learn more:

- [Bikal Website](#)



### Notices & Disclaimers:

Intel technologies may require enabled hardware, software or service activation. // No product or component can be absolutely secure. // Your costs and results may vary. // Intel Statement on Product Usage: Intel is committed to respecting human rights and avoiding causing or contributing to adverse impacts on human rights. See Intel's [Global Human Rights Principles](#). Intel's products and software are intended only to be used in applications that do not cause or contribute to adverse impacts on human rights. © Intel Corporation, Intel, the Intel logo, Intel Core, and other Intel marks are trademarks of Intel Corporation or its subsidiaries. Other names and brands may be claimed as property of others.