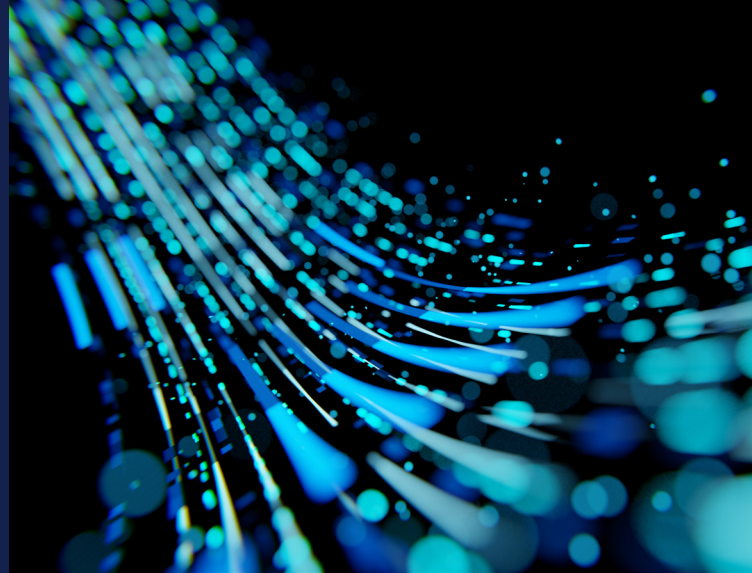


Compact Rack AI PC Delivering Speed, Reliability, and Scalability



Hongdafong HDF AIS-MTLD5P

Scalable AI Power: High-Performance Rack PC for Demanding Workloads

Hongdafong HDF AIS-MTLD5P is a high-performance, rack-mounted AI PC designed for demanding workloads such as AI inference, data analytics, and edge computing. Built for scalability and flexibility, it delivers exceptional computing power while maintaining energy efficiency. Powered by the Intel® Core™ Ultra 5 Processor 135H, it combines hybrid-core architecture with integrated Intel® Arc™ graphics and an onboard NPU for up to 18 TOPS (Int8) AI acceleration. The system features 48GB DDR5 memory, 1TB NVMe M.2 SSD, and supports PCIe 5.0 x16 expansion, enabling future-proof upgrades for GPUs or accelerators. Key advantages include low power consumption, high performance, security and reliability, and low latency, making it ideal for high-load environments where speed and stability are critical. Whether for real-time AI processing or large-scale data analysis, the HDF AIS-MTLD5P offers a compact yet powerful solution for modern computing challenges.



**Intel® Core™ Ultra
Processors
(Series 1) AI PC -
High
performance,
high computing
power and low
latency**

Intel Products and Technologies

Accelerating AI and Analytics at the Edge



Intel® Core™
Ultra Processors



OpenVINO™
Toolkit



Intel® oneAPI
Toolkit

Intel®
Virtualization
Technology for
Directed I/O
(Intel® VT-d)

Key Features

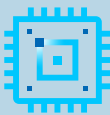
Empowered by Intel.



Low Power



Security & Reliability



High Performance,
High Computing
Power



Low Latency

Hongdafong AIS-MTLD5P



Product Specifications

CPU	Intel® Core™ Ultra 5 Processor 135H
Graphics	Intel® Arc™ Graphics
Memory	48G DDR5
Storage	1TB SSD
Wireless Network	N/A
LAN	1G LAN
Operating / Storage Temp.	0°C ~ 50°C / -20°C ~ 70°C
Dimension (W x D x H)	310mm x 180mm x 350mm
Weight	3.5kg
OS	Ubuntu 0.24.04.1

Learn More

[Hongdafong AIS-MTLD5P](#)