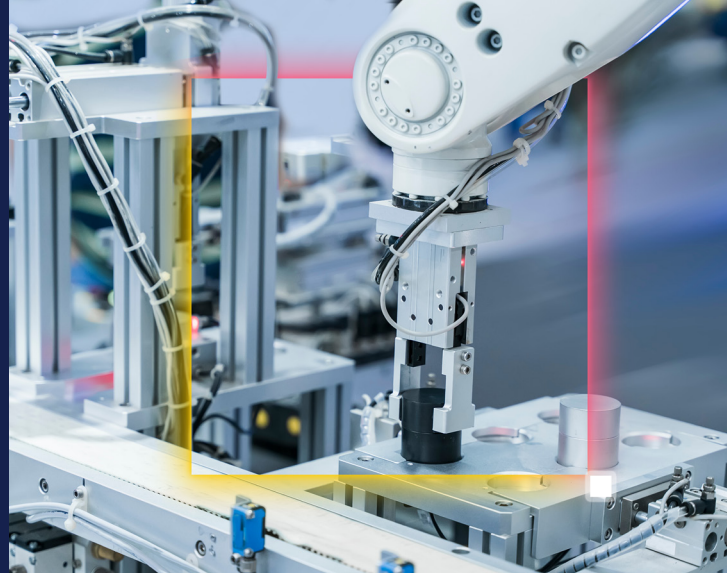


# Futurerobot Compact and High Performance AI BOX



## Futurerobot EA510F Edge AI Solution Based on Intel® Core Ultra Processors

FUTUREROBOT 卓信创驰® × intel ai

The EA510F Series Industrial PC is engineered to tackle the critical challenges of modern industrial automation and AIoT deployments, where harsh environments demand ruggedized solutions with uncompromised performance. Powered by Intel® Core™ Ultra processors, it combines 99 TOPS AI power with 75W MXM GPU scalability, making it ideal for complex edge tasks like multi-camera inspection systems. With rich I/O including 7\*LAN, 2\*COM, 4\*USB3.0, 32\*DIO, it delivers a robust platform tailored for industrial automation, robotics, and smart infrastructure.

The EA510F also supports multiple wireless communication modules including 4G/5G and WiFi, seamlessly connecting to industrial IoT platforms, sensors, PLCs, vision devices, and other terminals. Its built-in TPM 2.0 encryption chip ensures secure data transmission and storage. Featuring a compact industrial-grade design, it offers high reliability, supporting wide-temperature operation in harsh industrial environments.

***Industrial PC with  
high-speed AI  
performance,  
versatile  
expansions and  
rich I/O interfaces***

## Intel Products and Technologies

Accelerating AI and Analytics at the Edge



Intel® Core™  
Ultra Processors



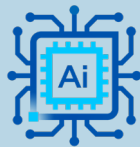
OpenVINO™  
Toolkit



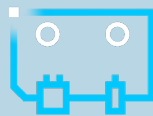
Intel® Ethernet

# Key Features

Empowered by Intel.



Efficient AI Inferencing



Compact Industrial Design



Rich I/O and Expansion



Security & Reliability

## Futurerobot EA510F



## Product Specifications

CPU	Intel® Core™ Ultra Processors (Series 2)
Graphics	Intel® Arc™ 140T GPU
Memory	Dual channel DDR5 up to 64GB
Storage	M.2 2280 M-Key x 1
Wireless Network	Support 4G/5G, Wi-Fi module expansion
LAN	Intel® Ethernet Controller I210-AT, GbE LAN, 7*RJ45
Operating / Storage Temp.	-20~60°C / -40~85°C
Dimension (W x D x H)	220mm x 226mm x 74.8mm
Weight	3.4kg
OS	Windows and Linux
I/O Options (Input/Output)	16DI, 16DO

## Learn More

[Futurerobot EA510F](#)