



Fanless Rugged Edge AI with Modular I/O for Harsh Industrial Use

EMS-MTH

Intel® Core™ Ultra processors (Series 1) Fanless Rugged Embedded System

Powered by Intel® Core™ Ultra processors (Series 1), the EMS-MTH addresses key industrial challenges such as harsh operating environments, diverse I/O requirements, and increasing demand for Edge AI computing. Its fanless, rugged design ensures reliable operation across wide temperature ranges, reducing maintenance costs and improving system longevity in mission-critical deployments. With high-performance architecture, integrated Intel® Arc™ graphics and NPU, it enables efficient multitasking and AI workloads at the edge.

EMS-MTH features rich I/O and Avalue's Intelligent Expansion Technology (IET), enabling flexible, modular I/O customization to meet diverse application needs, scalable configurations also accelerate time-to-market. Ideal for AMR, transportation, retail, and industrial automation, the EMS-MTH stands out for its balance of performance, flexibility, and rugged reliability.



Rugged, fanless edge AI system with modular I/O for flexible industrial deployment.

Intel Products and Technologies

Accelerating AI and Analytics at the Edge



[Intel® Core™ Ultra Processors](#)



[Intel® Arc™ Graphics](#)



[OpenVINO™ Toolkit](#)



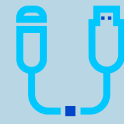
[Geti™](#)

Key Features

Empowered by Intel.



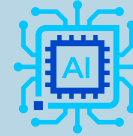
Fanless Compact Design



Modular Flexible I/O Design



Rugged Wide Temp & Power



Unified GPU NPU CPU AI Power

Avalue EMS-MTH



intel ai

Intel® AI Edge Systems

Product Specifications

CPU	Intel® Core™ Ultra processor (Series 1)
Graphics	Intel® Arc™ Graphics
Memory	2-Memory Socket, Max. Up to 64GB DDR5 5600
Storage	2-Storage (M.2 Key-B/M) support SATA3 & NVMe
Wireless Network	LTE/5G/Wi-Fi 6E Available
LAN	2-LAN Intel® Ethernet Controller I226
Operating / Storage Temp.	-40°C ~ 50°C / -30°C ~ 70°C
Dimension (W x D x H)	240mm x 150mm x 59mm (H85mm w/ IET module)
Weight	2.3kg
OS	Windows 10, Windows 11, Linux
I/O Options	Avalue IET module for I/O expansion

Learn More

[Avalue EMS-MTH](#)

Intel technologies may require enabled hardware, software or service activation. // No product or component can be absolutely secure. // Your costs and results may vary. // Performance varies by use, configuration and other factors. // See our complete legal [Notices and Disclaimers](#). // Intel is committed to respecting human rights and avoiding causing or contributing to adverse impacts on human rights. See Intel's [Global Human Rights Principles](#). Intel's products and software are intended only to be used in applications that do not cause or contribute to adverse impacts on human rights.

© Intel Corporation. Intel, the Intel logo and other Intel marks are trademarks of Intel Corporation or its subsidiaries. Other names and brands may be claimed as the property of others.