

# Enterprise-Ready AI Models Built for Accuracy

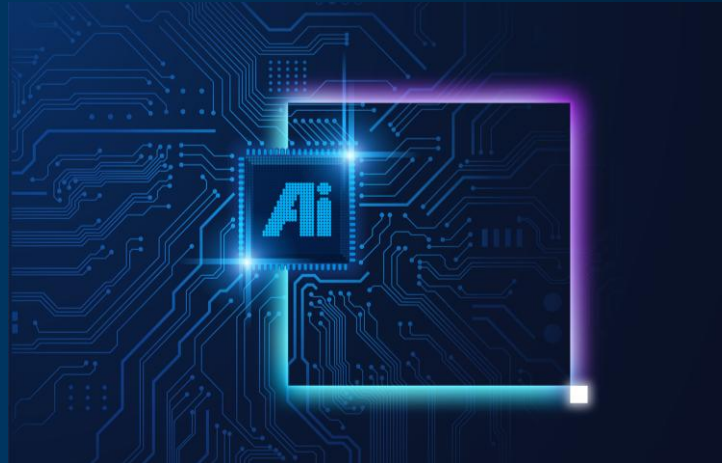
## Arcee Foundation Models (AFM)

AFM delivers enterprise-scale AI power without enterprise-scale infrastructure. Built for modest hardware and seamless deployment, AFM enables faster, more affordable launch and scaling of powerful language model solutions, at a fraction of the hosting cost of much larger LLMs while matching performance.

Optimized for low-RAM GPUs or even CPUs, AFM is ideal for constrained environments, edge devices, or cost-sensitive use cases. Unlike black-box models, AFM is fully open: open architecture, open weights, and no vendor lock-in. You can deploy AFM in any environment, on-premises, in the cloud, or hybrid, and integrate it using popular open-source frameworks like Hugging Face Transformers, vLLM, or llama.cpp.

AFM also includes native support for function calling and agentic reasoning, enabling tool use and workflow automation without fragile prompt chains. Trained on clean, legally sound data, AFM-4.SB

performs across 10+ languages.



### Key Intel-Enabled Features



Edge Inference



Cost-Effective



Open Architecture



Tool Compatibility

### Accelerate Business Transformation with Optimized, Ready-to-Deploy, Intel-Powered AI Partner Solution

- Intel® Advanced Matrix Extensions (Intel® AMX) boosts AI workloads for faster CPU inference
- OpenVINO™ toolkit optimizes models for Intel® CPUs with quantization and graph tuning
- High core count of Intel® Xeon® processors scales workloads efficiently with many cores and threads
- NUMA-Aware scheduling improves multi-socket CPU performance via intelligent resource allocation

### Intel Products and Technologies

- [Intel® Xeon® 6 Processors](#)
- [Intel® Advanced Matrix Extensions \(Intel® AMX\)](#)
- [OpenVINO™ Toolkit](#)

#### Notices & Disclaimers:

Intel technologies may require enabled hardware, software or service activation. // No product or component can be absolutely secure. // Your costs and results may vary. // Intel Statement on Product Usage: Intel is committed to respecting human rights and avoiding causing or contributing to adverse impacts on human rights. See Intel's [Global Human Rights Principles](#). Intel's products and software are intended only to be used in applications that do not cause or contribute to adverse impacts on human rights. © Intel Corporation, Intel, the Intel logo, Intel Core, and other Intel marks are trademarks of Intel Corporation or its subsidiaries. Other names and brands may be claimed as property of others.

*“We deliver scalable AI for real-world use, from edge to cloud, on infrastructure you fully control.”*

Mark McQuade  
CEO and Co-Founder,  
Arcee AI

#### Ordering Guidance:

- [Arcee AI | Book a Demo](#)

**Country/Geo:** Worldwide

**Edge Verticals:** Communication; Energy & Utilities; Financial Services; Health & Life Sciences

**Edge Use Cases:** Commercial / Enterprise AI Software

#### Learn more:

- [Arcee AI Website](#)