

Eliminate Manufacturing Defects Using AI-Powered Vision System

DeepInspect®



SwitchOn, Inc delivers AI-powered vision inspection systems designed for real-time defect detection on manufacturing lines. DeepInspect® runs directly at the edge, eliminating dependency on cloud processing while ensuring low-latency decision making and production-grade reliability. Built to operate efficiently on Intel® CPU-based platforms, the system performs high-speed inference without requiring discrete GPUs, reducing system size, power consumption, and thermal overhead.

Using Intel optimization technologies, the solution achieves deterministic performance suitable for industrial environments while maintaining scalability across deployment sites. This enables manufacturers to modernize quality control with compact, cost-effective, and supply-stable AI systems that integrate seamlessly into existing production lines. The solution has been validated and onboarded on the Schneider Electric Harmony PSA6, powered by Intel® Core™ processor with a multi-touch full HD display ensuring smooth operation for complex automation tasks and long-term stability for industrial applications.

PSA6 offers a unique mix of performance, durability, and cost-efficiency, enabling manufacturers to boost productivity and future-proof operations without overspending for demanding applications such as DeepInspect®.

*DeepInspect®
trains high-
accuracy
models with
fewer than 200
quality images,
completing the
entire process
in under 45
minutes.*

Intel Products & Technologies
Accelerating AI and analytics at the edge



[Intel® Core™ Processors](#)



[Intel® Iris® Xe Graphics](#)



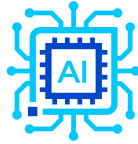
[OpenVINO™ Toolkit](#)

Key Intel-Enabled Features

Real-Time AI and analytics make it easy



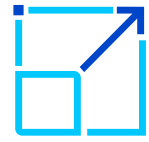
Fast Edge Inference



CPU-Optimized AI



Low Power AI



Scalable Edge Deploy

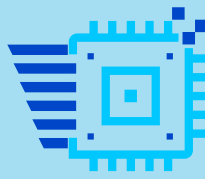
Powered by Intel Processors and optimized with the OpenVINO™ toolkit, SwitchOn, Inc and Schneider Electric deliver:

01



AI inference runs efficiently on Intel® CPUs at the edge

02



No discrete GPU required → smaller size, power & heat

03



Optimized CPU-based AI with Intel acceleration stack

04



Stronger supply stability vs GPU-dependent systems

That's the power of Intel Inside.

Country/Geo:

Worldwide

Verticals:

Manufacturing

Use Cases:

Quality Control
Anomaly Detection
Quality Inspection

About SwitchOn, Inc

SwitchOn, Inc is a Bengaluru-based technology company delivering AI-powered vision inspection solutions for manufacturers. Its DeepInspect® platform enables real-time, on-the-edge quality inspection to help brands achieve zero-defect production, reduce waste, and lower cost of quality. The company serves global enterprises across consumer goods, automotive, electronics, and pharmaceuticals.

<https://switchon.io/>

DeepInspect® - Edge AI Partner
Spotlight

intel ai

Intel® AI Edge Applications

About Schneider Electric

Schneider Electric is a global leader in energy management and automation, helping organizations electrify, automate, and digitalize operations. Serving homes, buildings, data centers, infrastructure, and industry, the company focuses on improving efficiency, resilience and sustainability through connected technologies, software, and services that support the energy transition worldwide.

<https://www.se.com/us/en/>

Schneider Electric PSA6 - Edge AI
Partner Spotlight

intel ai

Intel® AI Edge Systems

Notices & Disclaimers:

Intel technologies may require enabled hardware, software or service activation. // No product or component can be absolutely secure. // Your costs and results may vary. // AI features may require software purchase, subscription or enablement by a software or platform provider, or may have specific configuration or compatibility requirements. Intel Statement on Product Usage: Intel is committed to respecting human rights and avoiding causing or contributing to adverse impacts on human rights. See Intel's [Global Human Rights Principles](#). Intel's products and software are intended only to be used in applications that do not cause or contribute to adverse impacts on human rights.

© Intel Corporation, Intel, the Intel logo, Intel Core, and other Intel marks are trademarks of Intel Corporation or its subsidiaries.

Other names and brands may be claimed as property of others.