

Edge AI LPR for Faster, Smarter Vehicle Access Control

AI License Plate Recognition System

Easy Control's AI-powered License Plate Recognition (LPR) solution delivers fast, accurate vehicle identification for smart parking, gated access, and intelligent urban mobility. Combining advanced computer vision with LLM-based validation, it overcomes challenges like poor lighting, motion blur, and ambiguous characters to achieve high real-world accuracy.

Optimized with the OpenVINO™ toolkit, the solution accelerates AI inference across Intel® CPUs, GPUs, and NPUs, eliminating the need for costly discrete GPUs while improving performance and energy efficiency. Deployed on Intel® Core™ Ultra-powered edge devices, it enables real-time processing directly at the point of capture, reducing latency and preserving data privacy. Open integration via REST and MQTT ensures seamless connectivity with existing IoT, smart building, and parking platforms, improving throughput, security, and operational efficiency.



*Fast, precise vehicle access control using edge AI with **high accuracy and cost-efficient performance***

Key Intel-Enabled Features



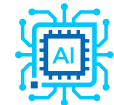
Real-Time AI Inference



High-Accuracy Recognition



Efficient Video Processing



Edge AI Deployment

Accelerate Business Transformation with Optimized, Ready-to-Deploy, Intel-Powered AI Partner Solution

- Uses the OpenVINO™ toolkit to accelerate low-latency AI inference across hardware
- Combines AI models with Intel® CPUs and NPUs to improve recognition accuracy
- Leverages Intel® Video Processing Library to optimize video decoding
- Runs on Intel® Core™ Ultra processors to enable secure, real-time edge AI processing

Intel Products and Technologies

- [Intel® Core™ Ultra Processors](#)
- [OpenVINO™ toolkit](#)
- [Intel® Video Processing Library](#)

Notices & Disclaimers:

Intel technologies may require enabled hardware, software or service activation. // No product or component can be absolutely secure. // Your costs and results may vary. // Intel Statement on Product Usage: Intel is committed to respecting human rights and avoiding causing or contributing to adverse impacts on human rights. See Intel's [Global Human Rights Principles](#). Intel's products and software are intended only to be used in applications that do not cause or contribute to adverse impacts on human rights. © Intel Corporation, Intel, the Intel logo, Intel Core, and other Intel marks are trademarks of Intel Corporation or its subsidiaries. Other names and brands may be claimed as property of others.

Ordering Guidance:

- [Contact Us](#)

Country/Geo: Asia Pacific, Japan, Australia & New Zealand

Edge Verticals: Video Safety & Critical Infrastructure; Transportation

Edge Use Cases: Smart City & Critical Infrastructure; Infrastructure Monitoring; Road Infrastructure; Smart Buildings; Access Control

Learn more:

- [Easy Control Website](#)