

# Edge AI Enabled Speech-to-Text for Faster and Secure Customer Engagement

## Patented Speech-to-Text Solution

Tetherfi's AI-powered speech-to-text engine at the Edge transforms voice interactions into accurate, real-time transcripts, enabling enterprises to deliver seamless and secure customer experiences.

Designed for industries with high customer engagement such as Banking, Insurance, Financial Services, Utilities, and Telecom, Tetherfi's Speech AI-powered real-time speech-to-text enhances contact center performance by enabling faster call handling, automated post-call summarization, and real-time insights into customer intent and sentiment—driving better customer experiences using sovereign data.

Powered by Intel® Xeon® 6 processors and optimized with OpenVINO™ toolkit, Tetherfi achieves up to 4x speedup for BF16 precision and supports multiple concurrent streams without performance loss, ensuring fast, reliable transcription for mission-critical environments.<sup>1</sup>



*Accelerated speech intelligence for flawless customer engagement.*

### Key Intel-Enabled Features



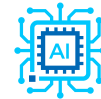
Reduced Latency



Real-Time Transcription



Multi-Stream Support



Scalable AI Performance

### Accelerate Business Transformation with Optimized, Ready-to-Deploy, Intel-Powered AI Partner Solution

- 4x faster BF16 inference with OpenVINO™ toolkit optimization<sup>1</sup>
- Handles up to 6 streams without performance loss
- 32-thread Intel® Xeon® 6 processors for high concurrency
- Efficient, secure AI for compliance-driven industries

### Intel Products and Technologies

- [Intel® Xeon® 6 Processors](#)
- [OpenVINO™ Toolkit](#)

#### Notices & Disclaimers:

Intel technologies may require enabled hardware, software or service activation. // No product or component can be absolutely secure. // Your costs and results may vary. // Intel Statement on Product Usage: Intel is committed to respecting human rights and avoiding causing or contributing to adverse impacts on human rights. See Intel's [Global Human Rights Principles](#). Intel's products and software are intended only to be used in applications that do not cause or contribute to adverse impacts on human rights. © Intel Corporation, Intel, the Intel logo, Intel Core, and other Intel marks are trademarks of Intel Corporation or its subsidiaries. Other names and brands may be claimed as property of others.

<sup>1</sup> Intel does not control or audit third-party data. You should consult other sources to evaluate accuracy.

#### Ordering Guidance:

- [Tetherfi | Contact Us](#)

**Country/Geo:** Asia Pacific, North America, Middle East, and Japan

**Edge Verticals:** Banking, Insurance, Financial Services, Telecom, Utilities and BPO

**Edge Use Cases:** Commercial / Enterprise AI Software; Contact Centers

#### Learn more:

- [Tetherfi Website](#)