

# Edge AI Compact Box PC with Intel® Core™ Ultra Series 3 Processor



## UNO-258

### Fanless Edge AI Box PC for Smart Manufacturing

The UNO-258 is Advantech's next-generation fanless Edge AI Box PC designed to accelerate real-time AI applications in smart manufacturing, machine vision, and industrial automation. Powered by Intel® Core™ Ultra Series 3 processors, the system delivers up to 180 TOPS AI performance through integrated CPU, GPU, and NPU architecture, enabling low-latency AI inference directly at the edge.

As industrial environments increasingly demand real-time inspection, autonomous operation, and AI-driven analytics, traditional systems often struggle with thermal limitations, unstable operation, and complex deployment. UNO-258 addresses these challenges with a rugged fanless design, wide-temperature operation, and industrial-grade reliability for harsh environments.

The compact platform supports high-speed connectivity, multiple vision and industrial I/O interfaces, and flexible expansion capabilities, making it ideal for Vision AI, robotics, smart transportation, and edge automation applications. Compared with conventional industrial PCs, UNO-258 combines high AI computing performance, fanless durability, and simplified deployment into a compact edge-ready platform optimized for next-generation Edge AI workloads.



***Fanless Edge AI computing optimized for real-time industrial intelligence***

## Intel Products and Technologies

Accelerating AI and Analytics at the Edge



**Intel® Core™ Ultra Processors**



**Intel® Arc™ Graphics**

# Key Features

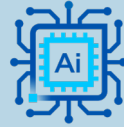
Empowered by Intel.



High-Performance Computing



Compact Fanless Design



Integrated AI Acceleration



Rich I/O & Fast Connectivity

## Advantech UNO-258

intel ai

Intel® AI Edge Systems



## Product Specifications

CPU	Intel® Core™ Ultra Series 3 Processor
Graphics	Intel® Arc™ Graphics (X <sup>e</sup> 3)
Memory	2 slots for DDR5 7200 (up to 64GB max per slot)
Storage	1 x M.2 M-key 2280 (PCIe x4, Gen 4 NVMe)
Wireless Network	Wi-Fi and LTE/5G Ready (via M.2 E-Key, B-Key, M-Key)
LAN	LAN A: Intel® Ethernet Connection I219-LM, 10/100/1000Mbps LAN B/C: Intel® Ethernet Controller I226-LM, 10/100/1000/2500Mbps LAN D/E (optional): Intel® I226-LM, 10/100/1000/2500Mbps
Operating / Storage Temp.	-20 ~ 60°C with 0.7 m/s airflow / -40 ~ 85°C
Dimension (W x D x H)	160mm x 160mm x 60mm
Weight	2.5kg
OS	Windows 11 LTSC, Ubuntu 24.04
I/O Options (Input/Output):	Dual LAN or isolated DIO/CANBUS/COM

## Learn More

[Advantech UNO-258](#)

Intel technologies may require enabled hardware, software or service activation. // No product or component can be absolutely secure. // Your costs and results may vary. // Performance varies by use, configuration and other factors. // See our complete legal [Notices and Disclaimers](#). // Intel is committed to respecting human rights and avoiding causing or contributing to adverse impacts on human rights. See Intel's [Global Human Rights Principles](#). Intel's products and software are intended only to be used in applications that do not cause or contribute to adverse impacts on human rights.

© Intel Corporation. Intel, the Intel logo and other Intel marks are trademarks of Intel Corporation or its subsidiaries. Other names and brands may be claimed as the property of others.