

Deliver Blazing-Fast, High-Performance Computing Across All Intelligent Edge Scenarios



Decenta S25-ARLS-WA02



Intel-Enabled AI Edge Tower-Rack Convertible Delivers High Performance Across Enterprise, Industrial, Medical, and Traffic Scenarios

Most companies struggle to process large amounts of data efficiently and adapt to different cases, causing delays and high costs due to varied development needs and AI compute limits. Decenta AI Tower-Swap All-in-One Machine built on the Intel® Q870 chipset, Supports Intel® Core™ Ultra processor, delivering strong computing performance. Energy-efficiency optimization ensures ultra-fast real-time decision-making in edge computing scenarios.

Supports two PCIe 5.0 x16 slots (supports 1x16 or 2x8 mode) and multiple PCIe 4.0 x4 slots, providing enterprise-grade storage expansion and compute capacity to meet high-throughput storage demands. Supports up to two high-performance AI accelerator cards, with 48GB GDDR6 large graphics memory hardcore configuration, delivers up to 394 TOPS(INT8) to efficiently handle AI development, LLM inference, complex scene rendering, high-resolution processing, and memory-intensive simulations. Widely applicable to education, healthcare, community security, and industrial quality inspection, it helps SMEs accelerate AI adoption.

**Triple
breakthroughs in
edge computing:
Decenta AI Edge
Tower-Rack
blends ATX
support with
flexibility,
reliability, and
space efficiency.**

Intel Products and Technologies

Accelerating AI and Analytics at the Edge



Intel® Core™
Ultra Processors



Intel® Arc™
Graphics



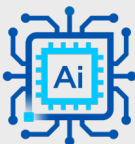
OpenVINO™
Toolkit



Intel® oneAPI
Toolkit

Key Features

Empowered by Intel.



Edge AI
Computing



Flexible
Architecture



Secure and
Reliable



High-
Performance I/O

Decenta S25-ARLS-WA02



Product Specifications

CPU	Intel® Core™ Ultra Processors (Series 2), TDP 125W, LGA 1851, Intel® Q870, TDP 6W
Graphics	Intel® Xe® LPG Graphics
Memory	4x DDR5 6400*MT/s U-DIMM memory, Dual channel, Max.192GB
Storage	M.2_1: M-Key 2242/2280 Slot, Support PCIe 5.0 X4(NVMe) mode M.2_2: M-Key 2242/2280 Slot, Support PCIe 4.0 X4(NVMe) & SATA mode
Wireless Network	1x M.2 E-Key 2230 Slot for Wi-Fi 7 & BT 5.4, Support PCIe 4.0 & CNVi mode
LAN	1x Intel® Ethernet Connection I219-V, Co-lay with Intel® Ethernet Connection I219-LM / 1x Intel® Ethernet Controller I210-IT / 1x Intel® Ethernet Controller I210, Reserved
Operating / Storage Temp.	0 ~ 60 °C / -40 ~ 85 °C
Dimension (W x D x H)	500mm x 435mm x 175mm
Weight	20 kg
OS	Windows 11/Linux (Ubuntu)

Learn More

[Decenta S25-ARLS-WA02](#)

Intel technologies may require enabled hardware, software or service activation. // No product or component can be absolutely secure. // Your costs and results may vary. // Performance varies by use, configuration and other factors. // See our complete legal [Notices and Disclaimers](#). // Intel is committed to respecting human rights and avoiding causing or contributing to adverse impacts on human rights. See Intel's [Global Human Rights Principles](#). Intel's products and software are intended only to be used in applications that do not cause or contribute to adverse impacts on human rights.

© Intel Corporation. Intel, the Intel logo and other Intel marks are trademarks of Intel Corporation or its subsidiaries. Other names and brands may be claimed as the property of others.