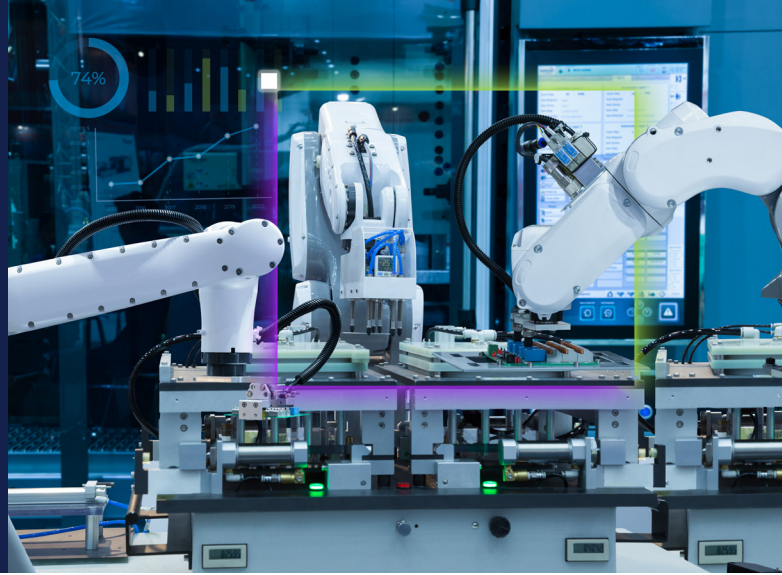


High-Performance AI-Ready Industrial Computing



CVTE CIS-PMTL-LW01

Intel® Core™ Ultra processors + NPU for Fast Recognition Tasks

CVTE has launched a high-performance embedded industrial computer based on Intel® Core™ Ultra Series processors. As a BOX computer integrated with an NPU, it provides a computing platform for scenarios such as machine vision and high-speed automatic control.

The CIS-PMTL-LW01 supports Intel® Core™ Ultra processors (Series 1 and 2) and comes with:

- Dual-channel memory with a maximum capacity of 96GB DDR5.
- A rich and practical set of interfaces:
 - 4 RJ45 network ports (3×I210 + 1×I266 controllers);
 - 4 USB 3.2 ports (3×Type A + 1×Type C);
 - 3 display interfaces (1 HDMI, 1 DP, plus Type C with DP++ support)

All these features making it suitable for diverse scenario requirements.

CVTE × **intel ai**

***Compact industrial
computer
delivering fast AI
processing and
rich I/O for
diverse
automation
needs.***

Intel Products and Technologies

Accelerating AI and Analytics at the Edge



Intel® Core™
Ultra Processors



Intel® Ethernet
Controller

Key Features

Empowered by Intel.



Low Latency



Multiple Network Ports



Secure and Reliable



Multi-Workload

CVTE CIS-PMTL-LW01



Product Specifications

CPU	Intel® Core™ Ultra 7 Processor 255H
Graphics	iGPU: Intel® Arc™ 130T GPU
Memory	So-dimm Dual Chanel 32Gx2, UP to 96GB
Storage	M.2 2280 SATA/NVME SSD
Wireless Network	Support 2230 WIFI
LAN	4*LAN Intel® Ethernet Controller I226-V*1 & Intel® Ethernet Controller I210-AT*3
Operating / Storage Temp.	-20°C ~ 55°C / -40°C ~ 80°C
Dimension (W x D x H)	170mm x 120mm x 60mm
Weight	1.3KG
OS	Windows 11, Ubuntu 24.04

Learn More

[CVTE CIS-PMTL-LW01](#)