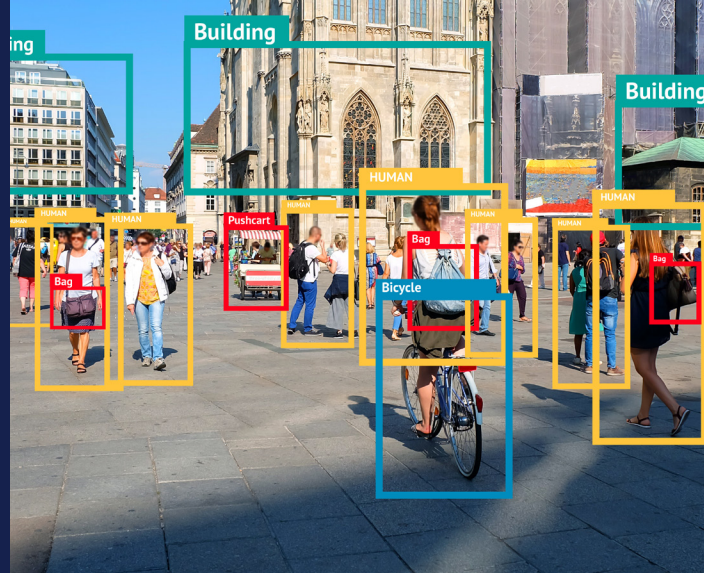


# Fanless Edge AI System with Intel® Core™ Ultra Series 3 Processor



## SYS-E103-14P

### Compact Fanless Industrial Computer Designed for Advanced Edge AI

Supermicro's SYS-E103-14P is a high-performance industrial fanless computer built on the groundbreaking Intel® Core™ Ultra Series 3 processor. Its unified AI engine delivers up to 180 platform TOPS. The integrated NPU 5 provides up to 50 dedicated TOPS for low-latency, real-time inferencing tasks such as object detection, safety monitoring, quality assurance, and inventory management.

The system supports three Intel® Core™ Ultra Series 3 processors for different inferencing needs:

- Intel® Core™ Ultra X7 Processor 368H: The flagship, featuring 16 cores and a powerful 12-core Xe3 iGPU for heavy vision-based AI.
- Intel® Core™ Ultra 5 Processor 336H: Balanced 12-core configuration for high-efficiency edge analytics.
- Intel® Core™ Ultra 5 Processor 335: Optimized for consistent, low-power control operations.

With up to 128GB DDR5-5600MT/s memory and PCIe 5.0 storage, this fanless unit is an AI powerhouse. It offers dual 2.5GbE ports, optional POE, and wide-range power input for industrial stability.



**Fanless edge AI System with Intel® Core™ Ultra Series 3, delivering 180 TOPS for real-time industrial vision.**

## Intel Products and Technologies

Accelerating AI and Analytics at the Edge



[Intel® Core™ Ultra Processors](#)



[Intel® Ethernet](#)



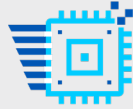
[OpenVINO™ Toolkit](#)



[Intel® oneAPI Toolkit](#)

## Key Features

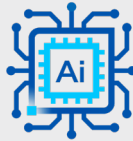
Empowered by Intel.



High-Performance  
CPU



Dual 2.5GbE  
w/PoE



Edge-AI  
Industrial Ready



Wide-Range  
Power & Temp

## Supermicro SYS-E103-14P



intel ai

Intel® AI Edge Systems

## Product Specifications

CPU	Intel® Core™ Ultra X7 Processor 368H
Graphics	Intel Arc™ B390
Memory	2× DDR5 SO-DIMM slots (2 channels), up to 128 GB DDR5-5600 non-ECC (1DPC), 1.1V
Storage	M.2-only storage with 1× PCIe 5.0 x4 M-Key (2242/2280), 1× PCIe 4.0 x2 M-Key (2280), plus B-Key (w/ nano-SIM) and E-Key slots; supports up to two NVMe 2280 SSDs
Wireless Network	M.2 E-Key 2230 slot (PCIe 4.0 x1/USB2.0) for optional Wi-Fi/BT modules; M.2 B-Key 3052 with nano-SIM for optional WWAN/LTE/5G
LAN	2× 2.5GbE (Intel® Ethernet Controller I226-IT, optional PoE) + 1× 1GbE (Intel® Ethernet Connection I219-LM)
Operating / Storage Temp.	0°C to 45°C / 0°C to 60°C
Dimension (W x D x H)	185mm x 140mm x 83mm
Weight	2.15kg (gross weight) / 1.47kg (net weight)
OS	Windows (IoT/Pro) and Linux
I/O Options (Input/Output):	2x USB 2.0 Type-A, 2x USB 3.2 Type-A 2x HDMI 2.1, 2x COM RS232/RS422/RS485, 1x SMBus 8-bit GPIO

## Learn More

[Supermicro SYS-E103-14P](#)

Intel technologies may require enabled hardware, software or service activation. // No product or component can be absolutely secure. // Your costs and results may vary. // Performance varies by use, configuration and other factors. // See our complete legal [Notices and Disclaimers](#). // Intel is committed to respecting human rights and avoiding causing or contributing to adverse impacts on human rights. See Intel's [Global Human Rights Principles](#). Intel's products and software are intended only to be used in applications that do not cause or contribute to adverse impacts on human rights.

© Intel Corporation. Intel, the Intel logo and other Intel marks are trademarks of Intel Corporation or its subsidiaries. Other names and brands may be claimed as the property of others.