

# Compact Design. Maximum Appliance Performance.



## BCD LLC BCDT03-PWS

### Compact 3-Bay Pro Workstation for High-Performance Video

Outperform a wide range of video computing tasks with the professional BCDT03-PWS. This tower workstation is compact enough to be deployed in a wide range of video surveillance applications while retaining the performance needed to excel in them. The latest 13th Gen Intel® Core™ processor ensures high-powered computing performance.

A boot optimized NVMe M.2 OS SSD ensure fast boot and application load times. BCD's standard 5-year, on-site, next business day warranty allows for users to know that reliability and support is always with this workstation.

All appliances are built in-house in BCD's secure facilities. BCD's operations have been assessed by DQS Inc, who certified that we meet the ISO 9001:2015 standard of maintaining a Quality Management System.

**BCD** × **intel ai**  
Intelligent Solutions

***Mainstream and  
Entry Edge  
AI - Gen/Vision  
AI Certified  
Solution***

## Intel Products and Technologies

Accelerating AI and Analytics at the Edge



**Intel® Core™**  
**Processors**

# Key Features

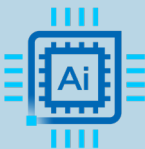
Empowered by Intel.



High Throughput



Cyber-Hardened Appliance



Gen/Vision AI Validated Platform



Custom Figuration for Your Application

## BCD LLC BCDT03-PWS



### Product Specifications

CPU	13th Gen Intel® Core™ i7 Processor: 16 Cores, 24 Threads, 5.40GHz
Graphics	Integrated graphics
Memory	128GB Max
Storage	72TB Max
Wireless Network	Yes
LAN	1 GbE RJ45
Operating / Storage Temp.	32°F - 95° F / 0°C - 35° C
Dimension (W x D x H)	175mm x 434.8mm x 359.9mm
Weight	20.06 lbs (9.1 kg)
OS	Windows, Linux

### Learn More

[BCD LLC BCDT03-PWS](#)

Intel technologies may require enabled hardware, software or service activation. // No product or component can be absolutely secure. // Your costs and results may vary. // Performance varies by use, configuration and other factors. // See our complete legal [Notices and Disclaimers](#). // Intel is committed to respecting human rights and avoiding causing or contributing to adverse impacts on human rights. See Intel's [Global Human Rights Principles](#). Intel's products and software are intended only to be used in applications that do not cause or contribute to adverse impacts on human rights.  
© Intel Corporation. Intel, the Intel logo and other Intel marks are trademarks of Intel Corporation or its subsidiaries. Other names and brands may be claimed as the property of others.