

High-Performance Rackmount Server for AI Inference and Edge Computing



Avalue HPS-ERSU4A



High-Performance Computing Platform Boosting Deep Learning, Cloud AI Inference for Sustainable Future

The Avalue HPS-ERSU4A is a high-performance 4U rackmount server built for AI inference, cloud computing, and data-intensive workloads. As industries accelerate digital transformation, organizations face the challenge of processing massive datasets in real time while balancing energy efficiency and scalability. Powered by the 5th Gen Intel® Xeon® Scalable processors, the HPS-ERSU4A delivers exceptional performance per watt with advanced AI acceleration through Intel® Deep Learning Boost (Intel® DL Boost) and AMX technologies. With support for DDR5 memory and PCIe 5.0, the platform ensures high throughput and low latency, making it ideal for edge AI, big data analytics, and quantum computing applications. Designed for reliability and long-term operation, Avalue's HPS-ERSU4A combines industrial-grade durability with scalable architecture, offering OEM/ODM flexibility to meet diverse deployment needs while reducing total cost of ownership.

***AI-optimized 4U
server delivering
powerful
performance and
energy efficiency***

Intel Products and Technologies

Accelerating AI and Analytics at the Edge



**Intel® Xeon®
Scalable Processors**



**OpenVINO™
Toolkit**

Intel® Deep Learning Boost

**Intel® Advanced Matrix
Extensions**

Key Features

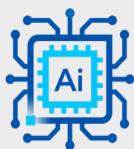
Empowered by Intel.



Supports Intel®
Xeon® CPUs



PCIe 5.0 &
DDR5 Speed



Built-In AI
Acceleration



Energy-Efficient
Design

Avalue HPS-ERSU4A



Product Specifications

CPU	Intel LGA4677 Socket supports 4th/5th Generation Intel® Xeon® Scalable processor (Max. TDP at 270W)
Graphics	Supports Intel® Arc™ graphics
Memory	6 x DDR5 5600 MHz RDIMM up to 1.5TB
Storage	3 x Front accessible 2.5" storage bays
Wireless Network	N/A
LAN	5 x RJ45 / MGMT port for dedicated IPMI access only LAN1 port for 1GbE shares with IPMI access / LAN2 port for 2.5GbE / LAN3 and 4 ports for 10GbE
Operating / Storage Temp.	0 ~ 35°C (L6 system) / -40°C 24hrs IEC60068-2-1 Cold test Test: Ab 70°C/ RH95% 24hrs IEC 60068-2-3 Test: Ca
Dimension (W x D x H)	240mm x 150mm x 59 mm (Standard) 240mm x 150mm x 85 mm (w/ IET module)
Weight	19.5KG
OS	Windows 10 IoT Enterprise LTSC 2021 Windows Server IoT 2019 with VT-d disabled / Windows Server IoT 2022 Ubuntu 21.10, 22.04 LTS or later Red Hat Enterprise Linux (RHEL) 8.2 and later

Learn More

[Avalue HPS-ERSU4A](#)

Intel technologies may require enabled hardware, software or service activation. // No product or component can be absolutely secure. // Your costs and results may vary. // Performance varies by use, configuration and other factors. // See our complete legal [Notices and Disclaimers](#). // Intel is committed to respecting human rights and avoiding causing or contributing to adverse impacts on human rights. See Intel's [Global Human Rights Principles](#). Intel's products and software are intended only to be used in applications that do not cause or contribute to adverse impacts on human rights.

© Intel Corporation. Intel, the Intel logo and other Intel marks are trademarks of Intel Corporation or its subsidiaries. Other names and brands may be claimed as the property of others.