

AI-Powered Metro Safety and Crowd Intelligence Platform

Transit Watch



*Turn metro surveillance into real-time AI insights for **safer, faster, and more efficient passenger operations.***

Transit Watch is an AI-powered video analytics platform that enhances metro safety, security, and operational efficiency through real-time edge intelligence. It transforms traditional surveillance into proactive monitoring by detecting incidents such as intrusions, unattended objects, unsafe passenger behavior, and congestion as they occur. The solution also delivers crowd analytics and demographic insights to optimize passenger flow and enable targeted advertising.

Built on Intel® Core™ Ultra processors and accelerated by the OpenVINO™ toolkit, Deep Learning Streamer, and Intel® Video Processing Library (Intel® VPL), Transit Watch enables low-latency, high-accuracy inference directly at the edge.

This architecture reduces reliance on manual monitoring while improving response times, operational decision-making, and passenger experience, all within a scalable and efficient deployment model.



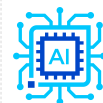
Key Intel-Enabled Features



Real-Time Safety



Crowd Flow Analytics



Demographic AI Engine



Edge AI Scalability

Accelerate Business Transformation with Optimized, Ready-to-Deploy, Intel-Powered AI Partner Solution

- The OpenVINO™ toolkit delivers fast low latency safety detection
- Intel® Core™ Ultra processors enable real time passenger flow insights
- Deep Learning Streamer optimizes video pipelines for inference performance
- Intel® VPL with OpenVINO™ boosts efficient edge video processing

Intel Products and Technologies

- [Intel® Core™ Ultra Processors](#)
- [OpenVINO™ toolkit](#)
- [Deep Learning Streamer](#)
- [Intel® Video Processing Library](#)

Ordering Guidance: [Contact Us](#)

Country/Geo: India

Edge Verticals: Video Safety & Critical Infrastructure; Transportation; Retail; Health & Life Sciences; Manufacturing

Edge Use Cases: Public Safety & Enterprise Security; Smart City & Critical Infrastructure; Quality Control; Operational Efficiency; Worker Safety; Loss Prevention; Virtual Care; Road Infrastructure

Learn more:

- <https://www.ltm.com/services/blueverse>

Notices & Disclaimers:

Intel technologies may require enabled hardware, software or service activation. // No product or component can be absolutely secure. // Your costs and results may vary. // Intel Statement on Product Usage: Intel is committed to respecting human rights and avoiding causing or contributing to adverse impacts on human rights. See Intel's [Global Human Rights Principles](#). Intel's products and software are intended only to be used in applications that do not cause or contribute to adverse impacts on human rights. © Intel Corporation, Intel, the Intel logo, Intel Core, and other Intel marks are trademarks of Intel Corporation or its subsidiaries. Other names and brands may be claimed as property of others.