

AI-Powered Industrial Safety and Real-Time Risk Prevention

Flagman

Flagman is an AI-powered computer vision solution that transforms industrial safety by detecting and preventing accidents in real time on the factory floor. Designed to address the limitations of manual processes and costly legacy systems, it continuously monitors critical zones, identifies hazards, and triggers instant alerts or machine interventions to reduce risk and human error.

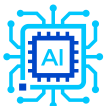
Running on Intel® Core™ and Intel® Core™ Ultra processors with integrated graphics and optimized with the OpenVINO™ toolkit and Deep Learning Streamer, Flagman delivers low-latency, high-performance AI inference at the edge, even in offline environments. Its seamless integration with existing cameras and control systems enables rapid deployment without complex infrastructure changes.

By combining advanced AI vision with Intel's edge computing technologies, Flagman empowers manufacturers to improve worker safety, ensure compliance, and enhance operational efficiency.



AI vision that prevents accidents in real time, ensuring safer, smarter industrial operations

Key Intel-Enabled Features



AI-Powered Accident Prevention



Real-Time Alerts



Full Offline Functionality



Automated Reporting

Accelerate Business Transformation with Optimized, Ready-to-Deploy, Intel-Powered AI Partner Solution

- The OpenVINO™ toolkit and Intel® Core™ Ultra processors enable fast, real-time hazard detection at the edge
- Intel® Core™ processors with integrated Intel® Graphics ensure low-latency alert generation
- Intel-based edge computing runs AI locally without network dependency
- Intel® architecture supports data capture and efficient event logging

Intel Products and Technologies

- [Intel® Core™ processors](#)
- [OpenVINO™ toolkit](#)
- [Intel® Core™ Ultra Processors](#)
- [Deep Learning Streamer](#)
- [Geti™](#)

Ordering Guidance:

- [Contact Us](#)

Country/Geo: Worldwide

Edge Verticals: Video Safety & Critical Infrastructure; Manufacturing

Edge Use Cases: Video Analytics; Smart Buildings; Smart City & Critical Infrastructure; Public Safety & Enterprise Security; Operational Efficiency; Worker Safety

Learn more:

- [Perleybrook Labs Website](#)

Notices & Disclaimers:

Intel technologies may require enabled hardware, software or service activation. // No product or component can be absolutely secure. // Your costs and results may vary. // Intel Statement on Product Usage: Intel is committed to respecting human rights and avoiding causing or contributing to adverse impacts on human rights. See Intel's [Global Human Rights Principles](#). Intel's products and software are intended only to be used in applications that do not cause or contribute to adverse impacts on human rights. © Intel Corporation, Intel, the Intel logo, Intel Core, and other Intel marks are trademarks of Intel Corporation or its subsidiaries. Other names and brands may be claimed as property of others.