

Innovative Stackable Powerhouse for Advanced Edge AI



TGS-2000 Series

Accelerate Intelligent AI Deployments with Compact AI PC Powered by Intel® Core™ Ultra Series 3

The Vecow TGS-2000 Series is an ultra-compact, stackable embedded system designed for demanding edge applications like Medical Imaging, Smart City, and Intelligent Factory. It is powered by the high-performance 16-core Intel® Core™ Ultra Series 3 processor with an advanced CPU+GPU+NPU hybrid architecture, delivering up to 100 TOPS of compute power for next-generation Edge AI. Key features include an innovative stackable design for flexible expansion (Optional AI accelerator, USB, Isolated DIO, COM, LAN, or 4G/LTE), robust I/O with 2 USB 3.2 Gen 2, 1 USB 3.2 Gen 2x2 Type-C, and 2 2.5GigE LAN, and three M.2 Sockets supporting multiple wireless connections. Built for rugged environments, it supports DC12V~24V or DC 24V Power Input and operates reliably across an extreme temperature range of -25°C to 55°C.

The Vecow TGS-2000 Series' stackable design allows for seamless expansion of AI accelerators (MXM GPU), high-speed I/O, or wireless modules (5G/LTE), giving businesses the flexibility to scale from fanless, energy-efficient tasks to high-end Computer Vision workloads without replacing entire systems.

Vecow x intel

Patented tool-less design for fanless operation, MXM GPU computing and flexible I/O expansion

Intel Products and Technologies

Accelerating AI and Analytics at the Edge



[Intel® Core™ Ultra Processors](#)



[Intel® Ethernet](#)



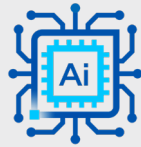
[Intel vPro®](#)



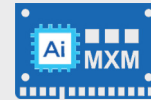
[OpenVINO™ Toolkit](#)

Key Features

Empowered by Intel.



Hybrid AI
Compute



AI Accelerating
Options



Stackable Modular
Expansion



Versatile
Configurations

Vecow TGS-2000 Series



intel ai

Intel® AI Edge Systems

Product Specifications

CPU	Intel® Core™ Ultra 9 Processor 386H / Intel® Core™ Ultra 5 Processor 336H
Graphics	Built-in Intel® Graphics
Memory	2 DDR5 6400MHz SO-DIMM, up to 128GB
Storage	1 M.2 Key M Socket (2280, PCIe 4.0 x4, up to 4TB)
Wireless Network	N/A
LAN	2 Intel® Ethernet Controller I226 2.5GigE LAN
Operating / Storage Temp.	TGS-2000: -25°C to 45°C with Air Flow / -40°C to 85°C TGS-2000F: -25°C to 55°C with Fan / -40°C to 85°C
Dimension (W x D x H)	117mm x 120mm x 64mm
Weight	1.8 kg
OS	Windows 11, Windows 10, Linux
I/O Options (Input/Output)	- 2 HDMI 2.1: Up to 4096 x 2304 @60Hz - 1 DisplayPort 1.4: Up to 3840 x 2160 @60Hz by USB Type-C - 2 USB 3.2 Gen 2 Type A / 2 USB 2.0 Type A / 1 USB 3.2 Gen 2x2 Type C (5V/3A) - 2 Intel® Ethernet Controller I226 2.5GigE LAN

Learn More

[Vecow TGS-2000 Series](#)

Intel technologies may require enabled hardware, software or service activation. // No product or component can be absolutely secure. // Your costs and results may vary. // Performance varies by use, configuration and other factors. // See our complete legal [Notices and Disclaimers](#). // Intel is committed to respecting human rights and avoiding causing or contributing to adverse impacts on human rights. See Intel's [Global Human Rights Principles](#). Intel's products and software are intended only to be used in applications that do not cause or contribute to adverse impacts on human rights.

© Intel Corporation. Intel, the Intel logo and other Intel marks are trademarks of Intel Corporation or its subsidiaries. Other names and brands may be claimed as the property of others.