

180 TOPS Compact Edge AI BOX for Medical/Robotics/ AI Agents



IEC-6700

Edge AI NUC BOX with High-Performance & Real Time Computing

Powered by the Intel® Core™ Ultra Series 3 processor, the IEC-6700 delivers a breakthrough 180 TOPS via a unified CPU+GPU+NPU architecture. This hybrid design simplifies system complexity, all while operating at a highly efficient 25W CPU TDP.

Differentiated by its exceptional AI capability within a compact NUC form factor, the IEC-6700 functions as a high-performance, on-premise Edge AI Agent. It seamlessly integrates multi-modal tasks—uniting large language models (LLMs) for natural language understanding, vision analytics, and robotic imitation learning. By intelligently routing workloads between secure, ultra-low-latency local inference and the cloud, it perfectly balances cost, efficiency, and data privacy.

Key deployment benefits include rapid real-time decision-making, significantly reduced latency, and robust support for multi-modal AI. By delivering all this with low power and strict data privacy, the IEC-6700 sets a new benchmark for next-generation Edge AI integration.

ARBOR × intel.

Enables ultra-low latency, multi-modal AI at the edge with 180 TOPS performance in a compact, efficient system

Intel Products and Technologies

Accelerating AI and Analytics at the Edge



Intel® Core™
Ultra Processors



OpenVINO™
Toolkit



Intel® Arc™
Graphics

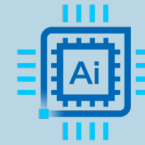
Intel® Volume
Management Device
(Intel® VMD)

Key Features

Empowered by Intel.



NUC size with High-Performance Computing



180 TOPS AI Platform Performance



Real-Time Intel® TCC/TSN Support



Dual M.2 Support Intel® VMD 0/1

Arbor Technology IEC-6700



intel ai

Intel® AI Edge Systems

Product Specifications

CPU	Intel® Core™ Ultra X7 Processor 358H
Graphics	Intel® Arc™ B390 GPU
Memory	2 x 262-pin SO-DIMM DDR5 7200/6400MHz up to 128GB
Storage	Supports Intel® VMD RAID 0/1
Wireless Network	1 x M.2 Key E (Wi-Fi 7 Module)
LAN	2 x Intel® Ethernet 2.5 Gigabit LAN
Operating / Storage Temp.	0 ~ 50°C / -40 ~ 85°C
Dimension (W x D x H)	115.4mm x 108mm x 44.5mm
Weight	515g
OS	Windows 11 IoT; Linux: Ubuntu
I/O Options (Input/Output)	Supports Quad display, 2 x HDMI 2.1, 1 x DP 2.1 (from USB4), 1 x DP 1.4a (from Type-C), 3 x USB3.2 Gen2, 1x COM Port

Learn More

[Arbor Technology IEC-6700](#)

Intel technologies may require enabled hardware, software or service activation. // No product or component can be absolutely secure. // Your costs and results may vary. // Performance varies by use, configuration and other factors. // See our complete legal [Notices and Disclaimers](#). // Intel is committed to respecting human rights and avoiding causing or contributing to adverse impacts on human rights. See Intel's [Global Human Rights Principles](#). Intel's products and software are intended only to be used in applications that do not cause or contribute to adverse impacts on human rights.

© Intel Corporation. Intel, the Intel logo and other Intel marks are trademarks of Intel Corporation or its subsidiaries. Other names and brands may be claimed as the property of others.